

# APPEALING TRANSFORMATIVE MASKS (US20207A&B)

Two colorful gel and oil that turn into a double protective mask when mixed together.

|          |   |  |   |
|----------|---|--|---|
| <b>A</b> | Water (Aqua)<br>Sodium benzoate, Potassium sorbate  | Ashland  | 70.23%<br>0.83%   |
| <b>B</b> | Sol. 30% Citric Acid  |  | 0.08%   |
| <b>C</b> | <b>SAKADIKIUM™</b> (Glycerin, Water, Hedychium Coronarium Root Extract)<br>Glycerin   | <b>Seppic</b>  | <b>2.50%</b><br>8.33%   |
| <b>D</b> | <b>SEPIMAX ZEN™</b> (Polyacrylate Crosspolymer-6)   | <b>Seppic</b>  | <b>1.00%</b>  |
| <b>E</b> | Fragrance   | EP   | 0.03%   |
| <b>F</b> | Sol 0.1% Fd&C Green N°3   | Sensient   | 0.33%   |
| <b>G</b> | <b>EMOGREEN™ L19</b> (C15-19 Alkane)<br><b>ANTILEUKINE 6™</b> (Caprylic/Capric Triglyceride, Laminaria Ochroleuca Extract)<br><b>MONTANE™ 20</b> (Sorbitan Laurate)<br><b>ORAMIX™ CG 110</b> (Caprylyl/Capryl Glucoside)<br>Isononyl Isononanoate<br>Fragrance<br>Sol 1% D&C Red N°27 | <b>Seppic</b><br><b>Seppic</b><br><b>Seppic</b><br><b>Seppic</b><br>Stearinerie dubois<br>EP<br>Sensient | <b>6.11%</b><br><b>2.22%</b><br><b>2.08%</b><br><b>0.42%</b><br>5.72%<br>0.01%<br>0.10% |

Aspect : Purple cream

SEPPIC

All information contained herein is intended merely to demonstrate the utility of Seppic products, and should not be construed as granting license to practice any compositions or methods covered by a patent or a patent application or efficacy or tolerance. All information contained in this specific technical documentation is believed to be accurate and has been set up by Seppic according to its own described methods and processes. Seppic however does not assume any liability or risks involved in the use of its products for the preparation and the assessment of the hereinabove formulation since the condition of use are beyond its control. Seppic customer must insure that the duplication of the hereinabove formulation is not infringing any intellectual property rights and that it complies with any regulatory status. Formula only for demonstration purposes. Seppic has not tested efficacy, toxicology and safety of this formulation if not mention.

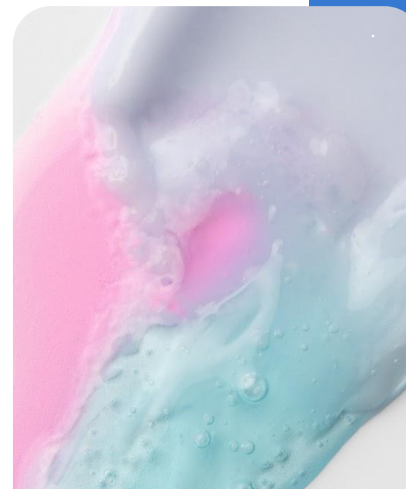
## HIGHLIGHT:

**EMOGREEN™ L19** gives a fresh and gliding touch with a silicone-like soft after-feel.

**SEPIMAX ZEN™** allows to obtain a thick, clear and stable gel with an easy spreading.

**ANTILEUKINE 6™ & SAKADIKIUM™** a duo of actives for soothing and exosome protection.

*Apply on the face, leave it 15 minutes then rinse off.*



NATURALITY  
PROFILE  
according to  
ISO 16128 norm

COLORFUL TEXTURE

BLEND IT YOURSELF

SOOTHING & PROTECTION