

Beauty Care

Ingredient Book

SEPPIC

Ingredients that inspire

Seppic eco-designs #BeautyTomorrow

By your side throughout the world, Seppic imagines and develops ingredients for Active Beauty (proven benefits & attractive concepts) and for Sensorial Beauty (unique performance & creative textures), that provide cosmetic products and consumers with efficacy and emotions.





Content

Active Beauty

Active Ingredients	2
Anti-aging	2
Daily defense	5
Skin complexion	6
Skin balance	7
Moisturization	7
Skin relief	10
Body specifics	10
Hair & Scalp care	11
<i>Skin biology</i>	8
<i>Hair biology</i>	14

Tables

<i>A-Z Index</i>	15
<i>Abbreviation list</i>	17
<i>Legend of pictograms</i>	17

Anti-aging

Firmness & Wrinkles

AMBRE OCEANE™ 2C

Aqua/Water - Pelvetia Canaliculata Extract



Mature skin expert

Benefits on volunteers

- Total surface area of wrinkles: -16%
- Number of wrinkles: -15%
- Average depth wrinkles: -5%

Mode of action

- Anti-MMP3: -32%

Nature

Sea amber

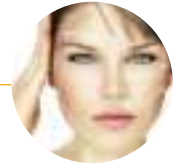
Solubility: water soluble

Form: liquid

Use level: 1%

Other version available:

AMBRE OCEANE™ SPE
is QD Additive



ANTILEUKINE 6™

Caprylic/Capric Triglyceride -
Laminaria Ochroleuca Extract



Global anti-aging & defense shield

Benefits on volunteers

- Wrinkle depth: -9% after 2 months
- Firmness: self evaluation
- In vivo: rapid soothing effect after 24h

Mode of action

- Collagen: +30%
- GAG: +30%

Nature

Golden seaweed

Solubility: liposoluble

Form: liquid

Use level: 2%

Preservative free

ASPAR'AGE™

Aqua/Water - Propanediol* -
Asparagopsis Armata Extract



*Plant-based & Renewable

A new healthy aging approach

Benefits on volunteers

- -13% of wrinkles volume at D28, vs D0
- Skin is perceived younger by people

Mode of action

- Regulating contagious aging

Nature

An extract of *Asparagopsis armata*, a seaweed that contains Mycosporine-like amino acids (MAA)

Solubility: water soluble

Form: liquid

Use level: 1%

Preservative free

BIOPLASMA™ FA

Aqua/Water - Butylene Glycol* -
Plankton Extract** - Arginine Ferulate



*Plant-based & Renewable / **Plankton Origin:
(species) *Scenedesmus Obliquus*

Combine desert & ocean strengths

Benefits on volunteers

- -15% wrinkles depth at D28, vs D0

Nature

Desert microalgae

Solubility: water soluble

Form: liquid

Use level: 1%

Preservative free

CELTOSOME™ CRITHMUM MARITIMUM

Crithmum Maritimum Callus Culture Filtrate



Rejuvenation from biotechnologies

Benefits on volunteers

- Clinical signs improved: +39% for wrinkles signs, +41% for tonicity vs T0 (10 months treatment) - specifically for concerned women
- Better hydration after 2 hours vs placebo

Mode of action

- Collagen synthesis

Nature

Plant cells from sea fennel

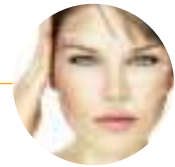
Solubility: dispersible

Form: powder

Use level: 0.1 to 0.2%

Preservative free

Firmness & Wrinkles



CELTOSOME™ ERYNGIUM MARITIMUM

Eryngium Maritimum Callus Culture Filtrate



Full skin renewal from biotechnologies

Benefits on volunteers

- +27% firmness by self evaluation

Mode of action

- Better structure of dermo-epidermic junction, dermis & epidermis: +15% collagen, +16% GAG
- Cell proliferation in epidermis: +19% mitotic index

Nature

Plant cells from sea holly

Solubility: dispersible

Form: powder

Use level: 0.05%

Preservative free

EPHEMER™

Caprylic/Capric Triglyceride -
Undaria Pinnatifida Extract



Ephemeral algae cells for anti-aging

Benefits on volunteers

- Reinforces the anti-oxidant capacity of the skin vs placebo

Mode of action

- Mitochondrial DNA protection: +63% aconitase
- Protects cells from free radicals: +19% catalase

Nature

Ephemeral cells in the lifecycle of macroalgae

Solubility: liposoluble

Form: liquid

Use level: 1%

Preservative free

JUVENESSENCE™

Caprylic/Capric Triglyceride -
Alaria Esculenta Extract



Reverse aging effect

Benefits on volunteers

After 1 month cutometer:

- Elasticity: +20%
- Firmness: +25%
- Self evaluation: improves firmness: 90%
- Decreases the depth of wrinkles: 80% of volunteers

Mode of action

- Downregulates progerin for mature skin: -79%

Nature

The Arctic winged kelp

Solubility: liposoluble

Form: liquid

Use level: 1%

Preservative free

THALASSINE 2™

Aqua/Water - Tripleurospermum Maritimum Extract



Skin myorelaxant

Mode of action

- Reduces muscle contractions
- Protects skin against free radicals
- Stimulates GAG & collagen production

Nature

Sea chamomile

Solubility: water soluble

Form: liquid

Use level: 1%

Preservative: sorbic acid

Plumping



AMBRE OCEANE™ 2C

Aqua/Water - Pelvetia Canaliculata Extract



Collagen-like algae

Mode of action

- GAG: +19%
- Hyaluronic acid: +26%
- Collagen III: +18%

Nature

Sea amber

Solubility: water soluble

Form: liquid

Use level: 1%

Other version available:

AMBRE OCEANE™ SPE
is QD Additive

Plumping

SEA LAVENDER SC

Caprylic/Capric Triglyceride -
Limonium Gerberi Extract



Replump dermis due to cell communication

Benefits on volunteers

- Moisturizing effect vs placebo from 2 to 24 hours: +30%

Mode of action

- +31% collagen IV
- +21% collagen VII
- +31% GAG, +27% hyaluronic acid
- Activates connexin 43 for cell communication

Nature

Immortal blue

Solubility: liposoluble

Form: liquid

Use level: 1%

Preservative free



Skin remodeling

CELTOSOME™ CRITHMUM MARITIMUM

Crithmum Maritimum Callus Culture Filtrate



Rejuvenation from biotechnologies

Benefits on volunteers

- Clinical signs improved: +39% for wrinkles signs, +41% for tonicity vs T0 (10 months treatment) - specifically for concerned women
- Better hydration after 2 hours vs placebo

Mode of action

- Collagen synthesis

Nature

Plant cells from sea fennel

Solubility: dispersible

Form: powder

Use level: 0.1 to 0.2%

Preservative free



Energizing

BIOPLASMA™ BG

Aqua/Water - Butylene Glycol* - Plankton Extract**



*Plant-based & Renewable / **Plankton Origin:
(species) Scenedesmus Obliquus

Desert microalgae for cell energy

Mode of action

- ATP: +27%
- ATP after ozone stress: +39%
- ATP after H₂O₂ stress: +45%

Nature

Desert microalgae

Solubility: water soluble

Form: liquid

Use level: 1%



GULF STREAM SEA WATER™

Sea Salt



30x more concentrated in minerals than sea water

Benefits

- Optimizes cell functions

Nature

Sea powder

Solubility: water soluble

Form: powder

Use level: 2%

Daily defense

Anti-oxidant

EPHEMER™

Caprylic/Capric Triglyceride -
Undaria Pinnatifida Extract



Protect the genes of Eve

Benefits on volunteers

- Clinic anti-oxidant vs placebo (after day 28)
- Clinic anti-oxidant: +15% vs D0

Mode of action

- Immediate (-100% vs control) & long lasting (-36% vs control) anti-oxidant, protecting the mitochondria
- More efficient than a seaweed extract

Nature

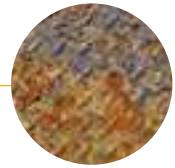
Ephemeral cells in the lifecycle of macroalgae

Solubility: liposoluble

Form: liquid

Use level: 1%

Preservative free



Detoxifying & Anti-pollution

BIOPLASMA™ FA

Aqua/Water - Butylene Glycol* - Plankton Extract** -
Arginine Ferulate



*Plant-based & Renewable / **Plankton Origin:
(species) Scenedesmus Obliquus

Cell detoxification & communication

Mode of action

Proteasome stimulation for mature skin:

- Proteasome 20S: +64%
- Proteasome 26S: +45%
- Complex proteasome PA28: +46%

Nature

Desert microalgae

Solubility: water soluble

Form: liquid

Use level: 1%

Preservative free



CONTACTICEL™

Aqua/Water - Butylene Glycol* -
Hydrolyzed Rhodophyceae Extract



*Plant-based & Renewable

Regulation of oily skin exposed to pollution

Benefits on volunteers

- Reduces the ozonolyzed squalene, as a protection of the skin against pollution

Mode of action

- Regulation of lipids (-17%) in polluted cells by urban dust
- Protection from the effects of heavy metals (cell proteins, cell DNA), regulates inflammatory mediators (IL8 :-18%, IL1: -49%)
- Protective effects of the immunity against urban dust: protection of langerhans cells by reducing inflammation

Nature

Epiphytic macroalgae cells

Solubility: water soluble

Form: liquid

Use level: 1%

Preservative free

JUVENESSENCE™

Caprylic/Capric Triglyceride - Alaria Esculenta Extract



Detoxifying through proteasome stimulation

Mode of action

- Proteasome stimulation: +24%

Nature

The Arctic winged kelp

Solubility: liposoluble

Form: liquid

Use level: 1%

Preservative free

NATIVE ESSENCE™

Caprylic/Capric Triglyceride -
Crithmum Maritimum Extract



The keratogenesis architect

Mode of action

- Restores hydrolipidic barrier (ceramides 3 & 6)
- Detoxifies asphyxiated skin
- Protects blood vessel membranes

Nature

Sea fennel oil extract

Solubility: liposoluble

Form: liquid

Use level: 1%

Preservative free

Photo-aging, Blue light & IR protection



ANTILEUKINE 6™

Caprylic/Capric Triglyceride -
Laminaria Ochroleuca Extract



Daily soothing shield

Benefits on volunteers

- In vivo: quick soothing effect after 24h

Mode of action

- Sunburn cells (UVB induced) decrease: -50%
- Protection against UV stress, neurogenic suractivation & blue light exposure

Nature

Golden seaweed

Solubility: liposoluble
Form: liquid
Use level: 2%
Preservative free

BLUE SEAKALE SC

Caprylic/Capric Triglyceride -
Crambe Maritima Leaf Extract



Cutaneous soothing & cell proliferation

Benefits on volunteers

- -43% cutaneous reactivity

Mode of action

- -31% IL-1, -32% IL-6, -22% PGE2 (after UVB),
- +77% ceramides 2
- +14% cell proliferation

Nature

Highly salt-tolerant seakale

Solubility: liposoluble
Form: liquid
Use level: 1%
Preservative free

JUVENESSENCE™

Caprylic/Capric Triglyceride - Alaria Esculenta Extract



Skin protector

Mode of action

- Decreases IL-1, IL-6 & IL-8: -12% to 21%
- TNFα: -14%
- IFNγ: -8%

Nature

The Arctic winged kelp

Solubility: liposoluble
Form: liquid
Use level: 1%
Preservative free

SEA LAVENDER SC

Caprylic/Capric Triglyceride - Limonium Gerberi Extract



Halophyte plant for a better hydro-lipidic barrier

Benefits on volunteers

- Moisturizing vs placebo from 2 to 24 hours: +30%

Mode of action

- -37% IL-6, -33% IL-1 release (after UVB)
- +67% ceramides 1

Nature

Immortal blue

Solubility: liposoluble
Form: liquid
Use level: 1%
Preservative free

Lightening

Skin complexion

CELTOSOME™ CRITHMUM MARITIMUM

Crithmum Maritimum Callus Culture Filtrate



Pigmentation regulator from biotechnologies

Benefits on volunteers

- Significant lightening of skin pigmentation correlated to an increase of ITA compared to D0

Mode of action

- Inhibits tyrosinase activity, reduces melanin, reduces migration of melanosomes

Nature

Plant cells from sea fennel

Solubility: dispersible
Form: powder
Use level: 0.10%
Preservative free

SEASHINE™

Aqua/Water - Butylene Glycol* -
Alaria Esculenta Extract - Undaria Pinnatifida Extract



*Plant-based & Renewable

Lightener & skin sublimator

Benefits on volunteers

- Lightening: +30%

Mode of action

- Downregulates TRP-1 protein gene expression by 31%
- Downregulates EDNRB protein gene expression by 28%
- Downregulates RAB27A gene expression by 48%
- Inhibits PAR-2 production by 25%
- Decreases melanosomes migration into keratinocytes (-19%)

Nature

Sea shining laminarias

Solubility: water soluble
Form: liquid
Use level: 1%
Preservative free

Radiance

CELTOSOME™ CRITHMUM MARITIMUM

Crithmum Maritimum Callus Culture Filtrate



Pigmentation regulator from biotechnologies

Benefits on volunteers

- After 56 days of treatment, the scoring of radiance increased, meaning an improvement of 20% of radiant complexion vs D0

Mode of action

- Inhibits tyrosinase activity, reduces melanin, reduces migration of melanosomes

Nature

Plant cells from sea fennel

Solubility: dispersible
Form: powder
Use level: 0.10%
Preservative free

Radiance

NATIVE ESSENCE™

Caprylic/Capric Triglyceride -
Crithmum Maritimum Extract



Reinforce the barrier

Benefits on volunteers

- Radiance: +14% after 28 days
- Skin is less dull (90% of volunteers)

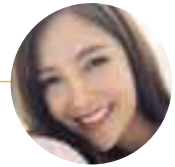
Mode of action

- Improves ceramide synthesis by 46%
- Regulates cell proliferation & fillagrin for differentiation control under asphyxia conditions

Nature

Sea fennel oil extract

Solubility: liposoluble
Form: liquid
Use level: 1 %
Preservative free



Purifying

Skin balance

CONTACTICEL™

Aqua/Water - Butylene Glycol* -
Hydrolyzed Rhodophyceae Extract



*Plant-based & Renewable

Regulation of oily skin exposed to pollution

Benefits on volunteers

- Limits excessive sebum production for long-term visible benefits

Mode of action

- Regulation of lipids (-17%) in polluted cells exposed to urban dust
- Protection from the effects of heavy metals: (cell proteins, cell DNA) regulates inflammatory mediators (IL-8 -18%, IL-1 -49%)

Nature

Epiphytic macroalgae cells

Solubility: water soluble
Form: liquid
Use level: 1 %
Preservative free



Hydration

Moisturization

BIOPLASMA™ BG

Aqua/Water - Butylene Glycol* -
Plankton Extract**



*Plant-based & Renewable / **Plankton Origin: (species) Scenedesmus Obliquus

Hydration from the desert algae

Benefits on volunteers

- Decreases TEWL after 2 hours: -6%

Nature

Desert microalgae

Solubility: water soluble
Form: liquid
Use level: 1 %

CODIAVELANE™ BG PF

Butylene Glycol* - Aqua/Water -
Codium Tomentosum Extract



*Plant-based & Renewable

Multi-action moisturizer bioinspired by the Emerald Sea

Benefits on volunteers

- Immediate & long-lasting hydration: +14% (after 8 hours & 24 hours) vs T0
- Long lasting hydration: +11% (after D28 vs D0)

Mode of action

- Stimulates ceramides, cerebroside, cholesterol

Nature

Velvet algae

Solubility: water soluble
Form: liquid
Use level: 2 %
Preservative free

HYDRACHRYSUM™

Aqua/Water - Glycerin -
Helichrysum Stoechas Callus Culture Lysate



Breaking Inflamm'Dryness™ vicious circle

Benefits on volunteers

- Intense & long-term skin hydration: +47% (after 21 days vs D0)
- Boosts the number of *Lacunae*, visual markers of moisturization

Mode of action

- Inflammation resolution; 2D Model: decreases pro-inflammatory & increases pro-resolving mediators / 3D Model: decreases PGE2 & increases 15-HETE
- Strong barrier function & homeostasis restoration: +77% thickness of *Stratum compactum* / +29% NMF / better integrity & cohesion of Epidermis / -78% TEWL

Nature

Plant cells lysate from *Helichrysum stoechas*

Solubility: water soluble
Form: liquid
Use level: 1 %

Skin biology

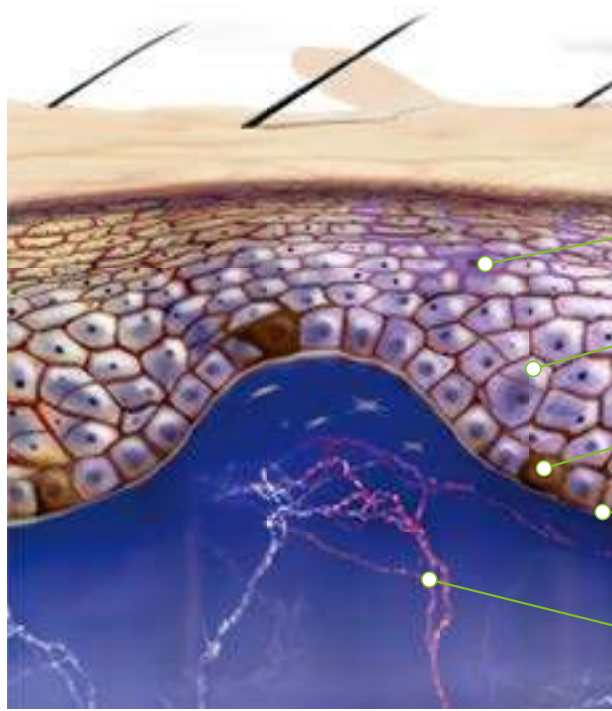


SKIN

- | | |
|----------------------------|------------------------|
| 1 Epidermis | 7 Eccrine sweat gland |
| 2 Dermis | 8 Apocrine sweat gland |
| 3 Hypodermis | 9 Vascular network |
| 4 Stratum corneum | 10 Hair follicle |
| 5 Dermo-epidermal junction | 11 Erector muscle |
| 6 Sebaceous gland | |

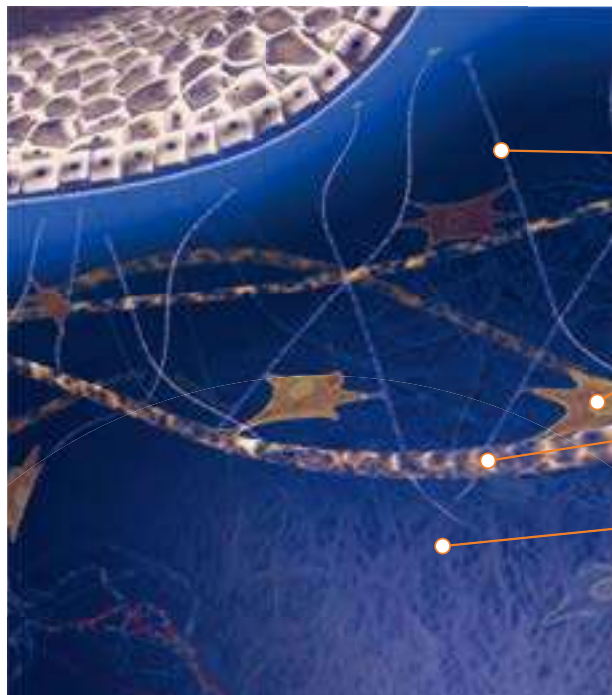
● EPIDERMIS

- 1 Stratum corneum
- 2 Stratum granulosum
- 3 Stratum spinosum
- 4 Basal layer
- 5 Dermo-epidermal junction
- 6 Vascular network
- 7 Keratinocyte
- 8 Melanocyte
- 9 Langerhans cell



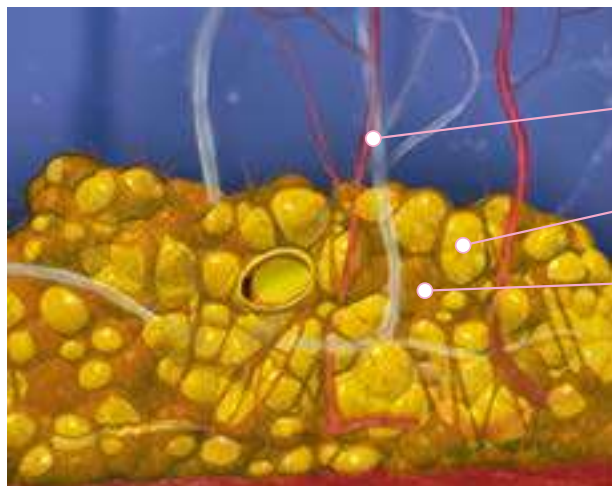
● DERMIS

- 1 Epidermis
- 2 Dermo-epidermal junction
- 3 Fibroblast
- 4 Collagen fiber
- 5 Elastin fiber
- 6 Ground substance
- 7 Papillar dermis
- 8 Reticular dermis



● HYPODERMIS

- 1 Adipocyte
- 2 Vascular network
- 3 Connective tissue



Skin relief

Skin repair & integrity

CELTOsome™ CRITHMUM MARITIMUM

Crithmum Maritimum Callus Culture Filtrate



Accelerated repairing & soothing from biotechnologies

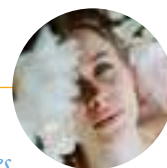
Mode of action

- Epidermis renewal by a factor of 5
- Reduces IL-1, IL-6, stimulates growth factors
- Stimulates collagen synthesis

Nature

Plant cells from sea fennel

Solubility: dispersible
Form: powder
Use level: 0.10%
Preservative free



Soothing: Redness & Reactivity

ANTILEUKINE 6™

Caprylic/Capric Triglyceride -
Laminaria Ochroleuca Extract



Daily soothing shield

Benefits on volunteers

- In vivo: quick soothing effect after 24h

Mode of action

- Decreases TNFα: -26% vs UVB
- Decreases LTB4: -29% vs UVB
- Decreases COX2: -29% vs UVB
- Decreases IL-10: -26% vs UVB

Nature

Golden seaweed

Solubility: liposoluble
Form: liquid
Use level: 2%
Preservative free



SEA MAYWEED SC

Aqua/Water - Tripleurospermum Maritimum Extract



Anti-redness for sensitive skin

Benefits on volunteers

- -24% cutaneous reactivity
- -19% redness

Mode of action

- -24% IL1, -32% IL6, -29% PGE2 under UVB
- -27% substance P under capsaicin stress, inhibition of substance P receptor

Nature

Sea chamomile

Solubility: water soluble
Form: liquid
Use level: 1%

SEA STARWORT OIL

Caprylic/Capric Triglyceride - Aster Tripolium Extract



Skin barrier reinforcement for soothing efficacy

Benefits on volunteers

- Anti-redness: -15% the surface covered by the microcirculation network
- +12% complexion homogeneity after 28 days (scoring)
- +20% hydration after 4 hours in corneometry

Nature

Sea aster oil extract

Solubility: liposoluble
Form: liquid
Use level: 1%
Preservative free

Firming & Stretchmark control

Body specifics

KALPARIANE™

Caprylic/Capric Triglyceride - Alaria Esculenta Extract



Firmness from pressure-resistant algae

Benefits on volunteers

- 90% of volunteers perceive improvement of firmness

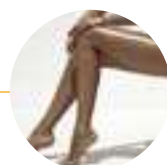
Mode of action

- Anti-elastase: +84% elastin vs elastase
- Anti-collagenase: -20%
- Matricial PG: +21%

Nature

The Arctic winged kelp

Solubility: liposoluble
Form: liquid
Use level: 1%
Preservative free



Marine scrubs



FLAKES OF CHONDRUS CRISPUS

Chondrus Crispus Powder



Body modelling

Benefits

- Visible red algae for SPA treatment

Nature

Marine glitters

Solubility: dispersible
Form: glitters
Use level: 1 to 5%
Function: exfoliating
Preservative free

MICRO ALGUE 80

Diatomaceous Earth (Solum Diatomeae)



Renewing skin

Benefits

- Gentle peeling agent

Sensorial profile

- Soft

Nature

Marine peeling

Solubility: dispersible
Form: powder
Use level: 2 to 5%
Function: exfoliating
Particle size: between 250 & 400 µ
Preservative free

SEL GRAIN™

Sea Salt



Body purifying scrub

Benefits

- Pure crystal for a body shape

Nature

Salt of the sea

Solubility: water soluble
Form: powder (crystals)
Use level: 1 to 5%
Function: exfoliating
Particle size: <2 mm
Preservative free

Hair Fiber

Hair & Scalp care



ALARIANE™ CV

Aqua/Water - Butylene Glycol* -
Alaria Esculenta Extract



For controled & smoothed unruly hair

Hair benefits

- Immediate smoothing & softening effects on curly hair
- Anti-frizz

Nature

The Arctic winged kelp

Solubility: water soluble
Form: liquid
Use level: 1%
Preservative free

Other version available: ALARIANE™

*Plant-based & Renewable

Hair Fiber

BIORESTORER™ PF

Aqua/Water - Butylene Glycol* -
Hypnea Musciformis Extract



*Plant-based & Renewable

Hair smoother

Hair benefits

- Restructures & smoothes hair
- Flattens & regulates cuticles

Nature

Hook weed extract, a subtropical seaweed

Solubility: water soluble
Form: liquid
Use level: 2 to 5%
Preservative free

BLUE SEAKALE HC

Aqua/Water - Butylene Glycol* -
Crambe Maritima Leaf Extract



*Plant-based & Renewable

Hair protection & nutrition

Hair benefits

- Shine
- Softness

Nature

Sea Kale extract

Solubility: water soluble
Form: liquid
Use level: 1%
Preservative free

SEA LAVENDER HC

Aqua/Water - Butylene Glycol* -
Limonium Gerberi Extract



*Plant-based & Renewable

Natural care for taming hair

Hair benefits

- Reduces hair reactivity to static electricity

Nature

Sea Lavender extract

Solubility: water soluble
Form: liquid
Use level: 1%
Preservative free

SEA SATIN™

Caprylic/Capric Triglyceride -
Beta Vulgaris (Beet) Root Extract



*Plant-based & Renewable

Natural hair conditioner & Scalp soother

Hair benefits

- Hair shine, smoothness, silkiness, easy combing, volume gain

Nature

Sea Beet (also called Wild Spinach) extract

Solubility: liposoluble
Form: liquid
Use level: 1%
Preservative free

Scalp Care

SEA SATIN™

Caprylic/Capric Triglyceride -
Beta Vulgaris (Beet) Root Extract



*Plant-based & Renewable

Natural hair conditioner & Scalp soother

Scalp benefits

- Scalp soothing (-29% IL-1, -30% IL-6, -36% PGE2)
& youthfulness protector (beta-galactosidase)

Nature

Sea Beet (also called Wild Spinach) extract

Solubility: liposoluble
Form: liquid
Use level: 1%
Preservative free



BLUE SEAKALE HC

Aqua/Water - Butylene Glycol* -
Crambe Maritima Leaf Extract



*Plant-based & Renewable

Hair protection & nutrition

Scalp benefit

- Antioxidant

Nature

Sea Kale extract

Solubility: water soluble
Form: liquid
Use level: 1%
Preservative free

Marine extracts

Brown Seaweed

Fucus vesiculosus **OLEAPHYCOL FV**

Caprylic/Capric Triglyceride -
Fucus Vesiculosus Extract

Solubility: oil
Preservative free



Fucus vesiculosus **SUPERPHYCO-D™ BG PF**

Aqua/Water - Butylene Glycol -
Fucus Vesiculosus Extract

Solubility: water
Preservative free

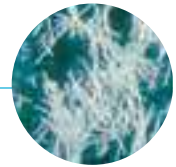


Blue Seaweed

Spirulina **SPIRULINE AP**

Aqua/Water - Butylene Glycol -
Spirulina Platensis Extract

Solubility: water



Marine scrubs

MICRO ALGUE 80

Diatomaceous Earth (Solum Diatomeae)



Renewing skin

Benefits

- Gentle peeling agent

Sensorial profile

- Soft

Nature

Marine peeling

Solubility: dispersible
Form: powder
Use level: 2 to 5%
Function: exfoliating
Particle size: between 250 & 400 µ
Preservative free

SEL GRAIN™

Sea Salt



Body purifying scrub

Benefits

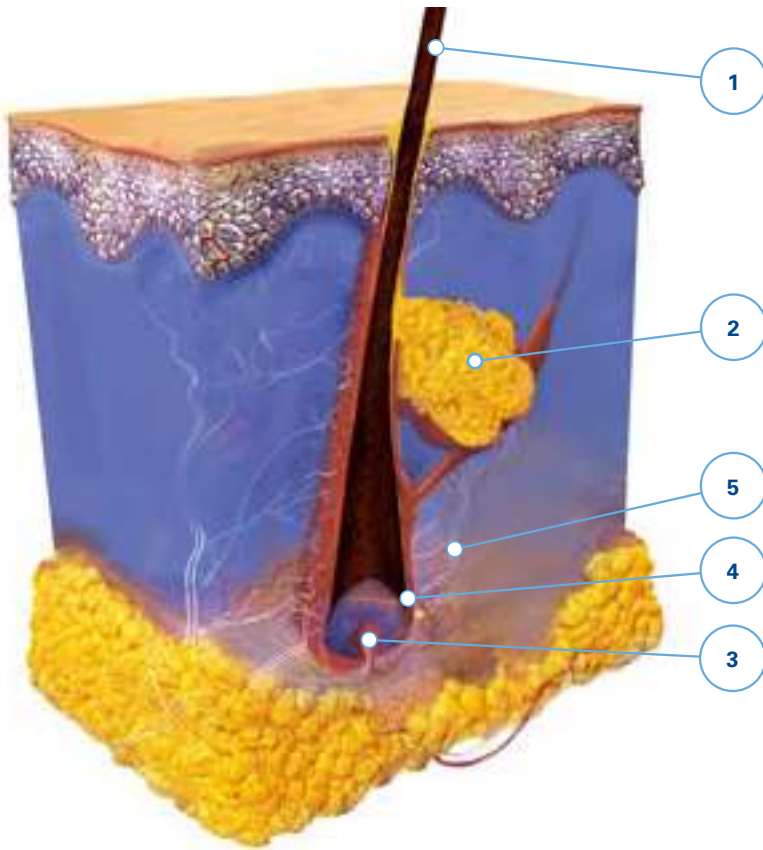
- Pure crystal for a body shape

Nature

Salt of the sea

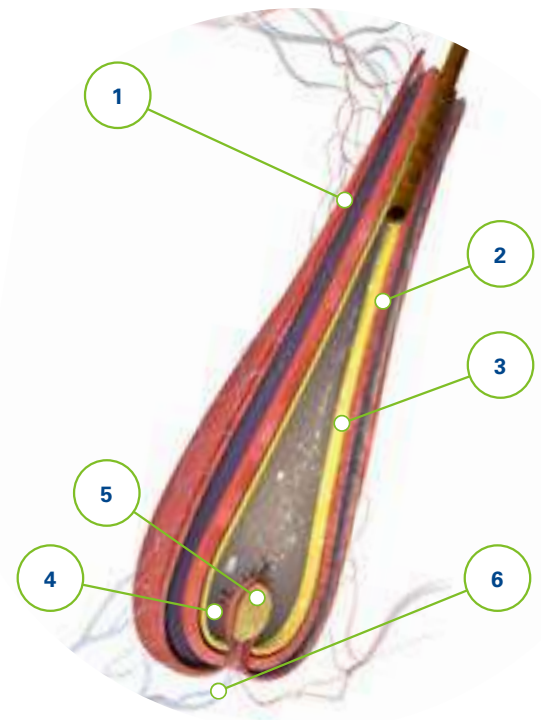
Solubility: water soluble
Form: powder (crystals)
Use level: 1 to 5%
Function: exfoliating
Particle size: <2 mm
Preservative free

Hair biology



PILOSEBACEOUS UNIT

- ① Hair Shaft
- ② Sebaceous gland
- ③ Dermal papilla
- ④ Bulb
- ⑤ Vascular network

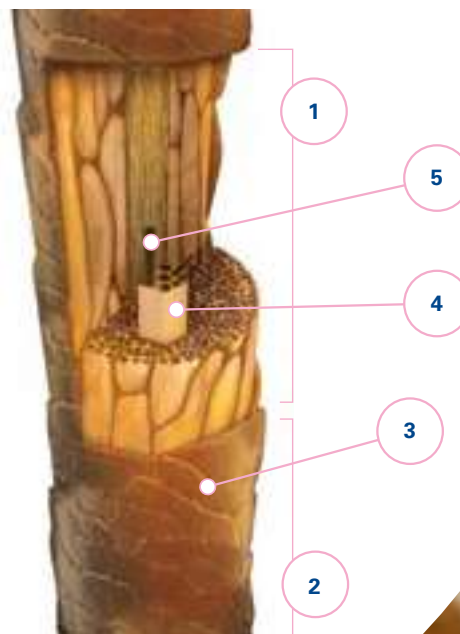


HAIR BULB

- ① Connective tissue sheet
- ② Outer root sheath
- ③ Inner root sheath
- ④ Matrix
- ⑤ Dermal papilla
- ⑥ Vascular network





HAIR LONGITUDINAL SECTION

- ① Cortex
- ② Cuticle
- ③ Scale
- ④ Macrofibrilla
- ⑤ Microfibrilla



A-Z Index

ALARIANE™ CV	11	Aqua/Water - Butylene Glycol* - Alaria Esculenta Extract *Plant-based & Renewable	      
AMBRE OCEANE™ 2C	2, 3	Aqua/Water - Pelvetia Canaliculata Extract	     
ANTILEUKINE 6™	2, 6, 10	Caprylic/Capric Triglyceride - Laminaria Ochroleuca Extract	   MB   
ASPAR'AGE™	2	Aqua/Water - Propanediol*- Asparagopsis Armata Extract *Plant-based & Renewable	   MB   
BIOPLASMA™ BG	4, 7	Aqua/Water - Butylene Glycol*- Plankton Extract** *Plant-based & Renewable **Plankton Origin: (species) Scenedesmus Obliquus	   
BIOPLASMA™ FA	2, 5	Aqua/Water - Butylene Glycol*- Plankton Extract*- Arginine Ferulate *Plant-based & Renewable **Plankton Origin: (species) Scenedesmus Obliquus	   
BIORESTORER™ PF	12	Aqua/Water - Butylene Glycol* - Hypnea Musciformis Extract *Plant-based & Renewable	   
BLUE SEAKALE HC	12	Aqua/Water - Butylene Glycol* - Crambe Maritima Leaf Extract *Plant-based & Renewable	     
BLUE SEAKALE SC	6	Caprylic/Capric Triglyceride - Crambe Maritima Leaf Extract	   MB   
CELTOSOME™ CRITHMUM MARITIMUM	2, 4, 6, 10	Crithmum Maritimum Callus Culture Filtrate	     
CELTOSOME™ ERYNGIUM MARITIMUM	3	Eryngium Maritimum Callus Culture Filtrate	     
CODIAVELANE™ BG PF	7	Butylene Glycol* - Aqua/Water - Codium Tomentosum Extract *Plant-based & Renewable	     
CONTACTICEL™	5, 7	Aqua/Water - Butylene Glycol* - Hydrolyzed Rhodophyceae Extract *Plant-based & Renewable	     
EPHEMER™	3, 5	Caprylic/Capric Triglyceride - Undaria Pinnatifida Extract	   MB   
FLAKES OF CHONDROS CRISPUS	11	Chondrus Crispus Powder	  
GULF STREAM SEA WATER™	4	Sea Salt	     
HYDRACHRYSUM™	7	Aqua/Water - Glycerin - Helichrysum Stoechas Callus Culture Lysate	    
JUVENESSENCE™	3, 5, 6	Caprylic/Capric Triglyceride - Alaria Esculenta Extract	   MB   
KALPARIANE™	10	Caprylic/Capric Triglyceride - Alaria Esculenta Extract	   MB   
MICRO ALGUE 80	11, 13	Diatomaceous Earth	   
NATIVE ESSENCE™	5, 7	Caprylic/Capric Triglyceride - Crithmum Maritimum Extract	   MB   
OLEAPHYCOL FV	13	Caprylic/Capric Triglyceride - Fucus Vesiculosus Extract	  MB   
SEA LAVENDER HC	12	Aqua/Water - Butylene Glycol - Limonium Gerberi Extract *Plant-based & Renewable	    
SEA LAVENDER SC	4, 6	Caprylic/Capric Triglyceride - Limonium Gerberi Extract	  MB   
SEA MAYWEED SC	10	Aqua/Water - Tripleurospermum Maritimum Extract	    
SEA SATIN™	12	Caprylic/Capric Triglyceride - Beta Vulgaris (Beet) Root Extract	  MB   
SEASHINE™	6	Aqua/Water - Butylene Glycol* - Alaria Esculenta Extract - Undaria Pinnatifida Extract *Plant-based & Renewable	     
SEA STARWORT OIL	10	Caprylic/Capric Triglyceride - Aster Tripolium Extract	  MB   

SEL GRAIN™	11, 13	Sea Salt	      
SPIRULINE AP	13	Aqua/Water - Butylene Glycol - Spirulina Platensis Extract	   
SUPERPHYCO-D™ BG PF	13	Aqua/Water - Butylene Glycol - Fucus Vesiculosus Extract	    
THALASSINE 2™	3	Aqua/Water - Tripleurospermum Maritimum Extract	    

Abbreviation list

ATP	<i>adenosine triphosphate</i>
COX	<i>cyclooxygenase</i>
DNA	<i>desoxyribonucleic acid</i>
EDNRB	<i>endothelin receptor type B</i>
GAG	<i>glycoaminoglycan</i>
IFN	<i>interferon</i>
IL	<i>interleukine</i>
LTB4	<i>leukotriene B4</i>
MDA	<i>malondialdehyde</i>
MMF	<i>marine moisturizing factor</i>
MMP	<i>matrix metalloproteinase</i>

PEG	<i>polyethylene glycol</i>
PG	<i>prostaglandin</i>
PGE	<i>prostaglandin E</i>
SKALP	<i>skin derived antileukoprotease</i>
SPA	<i>sana per aquam (health thanks to water)</i>
TEWL	<i>trans-epidermal water loss</i>
TNF	<i>tumor necrosis factor</i>
TRP	<i>tyrosinase related protein</i>
UV	<i>ultra-violet</i>
UVA	<i>ultra-violet A</i>
UVB	<i>ultra-violet B</i>

Legend

FUNCTION

Actives

Functional Additives

CERTIFICATIONS & APPROVALS



CHINA Compliant: all INCI names are listed on the 2021 IECIC list.



QD Additive: approved as QD additive in Japan.



NATRUE Approved: raw material approved according to NATRUE Standard.



COSMOS APPROVED

COSMOS Approved: raw material verified by ECOCERT GREENLIFE, conform to the COSMOS Standard.

MB

MASSBALANCE Certified: supplied under MassBalance certification BVC-RSPO-1-1972708497. Contributes to the production of certified sustainable palm oil.



VEGAN Suitability assessed according to Seppic Vegan criteria:

- not manufactured using derived animal raw materials or processing aids,
- does not come into direct contact with material from animal origin at any stage of the manufacturing process,
- is not tested on animals in terms of regulation (EC) No.1223/2009 of the european parliament and of the council of 30 November 2009 on cosmetic products - Chapter V - Art.18.



HALAL Certified: raw material certified by HCS organism, officially recognized by the highest Halal authorities including MUI (Indonesia), JAKIM (Malaysia), MUIS (Singapore) and CICOT (Thailand).



NATURALITY Profile: naturality profile according to ISO 16128 norm, is available upon request (NOC: Natural Origin Content).



NOC
≤50%



NOC
>50%



NOC
>99%

Nota:

The data in this document are deemed to be valid at the date indicated on the document itself, at the best of Seppic's knowledge. Seppic does not commit itself to automatically update this document and to automatically communicate the updated document to its customers. Seppic makes no warranties, whether express, implied or statutory, as to the product which is the subject of this document. The information set forth herein is furnished free of charge and is based on technical data that Seppic believes to be reliable. It is intended for use by persons having technical skill and their own discretion and risk. Since conditions of use are outside Seppic's control, Seppic makes no warranties, express or implied, and assumes no liability in connection with any use of this information. Nothing herein is to be taken as a license to operate under or a recommendation to infringe any patents. The final use of the Raw Material supplied by Seppic and the compliance with associated regulations remains the sole responsibility of the customer. Seppic commits to supply Raw Materials that are in conformity with the application claimed. According to the European Cosmetic Regulation, Seppic's customers are solely responsible for the safety evaluation of the cosmetic formulations containing Raw Materials supplied by Seppic*.

Air Liquide Healthcare is a world leader in medical gases, home healthcare and healthcare specialty ingredients. Thanks to the 16,300 men and women from our Healthcare activities, we are an expert in chronic diseases following up 1,8 Million patients at home and in new places of care, and supplier of medical gases solutions and associated services for 15,000 hospitals and clinics. We are engaged alongside patients, healthcare professionals and hospitals to make the healthcare system efficient and virtuous for all, with one imperative: create value for the patient. Our claim 'Changing Care. With You' encapsulates this new perspective.

*Seppic being:

Seppic S.A. - Paris

FRANCE
Tel.: +33 (0)1 42 91 40 00
info.seppic@airliquide.com

Seppic S.A. - Castres

FRANCE
Tel.: +33 (0)5 63 72 69 69
Fax: +33 (0)5 63 72 69 70

Seppic S.A. - Pontrieux

FRANCE
Tel.: +33 (0)2 96 95 31 32
contact.biotechmarine@airliquide.com

Seppic S.A. - Lons

FRANCE
Tel.: +33 (0)5 59 13 04 20
contact-serdex@airliquide.com

Seppic S.A. - Villers-sur-Fère

FRANCE
Tel.: +33 (0)1 42 91 40 00
info.seppic@airliquide.com

UNITED STATES - Seppic Inc.

UNITED STATES
Tel.: +1 973 882 5597
us.seppic@airliquide.com

UNITED STATES - Polykon Manufacturing LLC

UNITED STATES
Tel.: +1 804 624 9057
sharon.harper@airliquide.com

BRASIL - Seppic Brasil EQCI Ltda

BRASIL
Tel.: +55 11 3252 3911
brasil.seppic@airliquide.com

COLOMBIA - Seppic Colombia SAS

COLOMBIA
Tel.: +571 702 44 48
colombia.seppic@airliquide.com

GERMANY - Seppic GmbH

GERMANY
Tel.: +49 (0)221 888824 0
germany.seppic@airliquide.com

ITALY - Seppic Italia Srl

ITALY
Tel.: +39 02 38009110
italy.seppic@airliquide.com

POLAND - Seppic Office

POLAND
Tel.: +48 22 11 60 759
poland.seppic@airliquide.com

INDIA - Air Liquide India Holding Pvt Ltd

INDIA
Tel.: +91 22 61046464
india.seppic@airliquide.com

SINGAPORE - Seppic Office

SINGAPORE
Tel.: +65 6378 5213
singapore.seppic@airliquide.com

KOREA - Seppic Office

Seoul, KOREA 06168
Tel.: +82-2-3019-2569
korea.seppic@airliquide.com

JAPAN - Seppic Office

JAPAN
Tel.: +81 3 6414 6725
japan.seppic@airliquide.com

CHINA - Seppic Shanghai Chemical Specialities Co.

CHINA
Tel.: +86 (21) 64 66 01 49
china.seppic@airliquide.com

© 2023 Seppic - Seppic is a subsidiary of the AIR LIQUIDE group