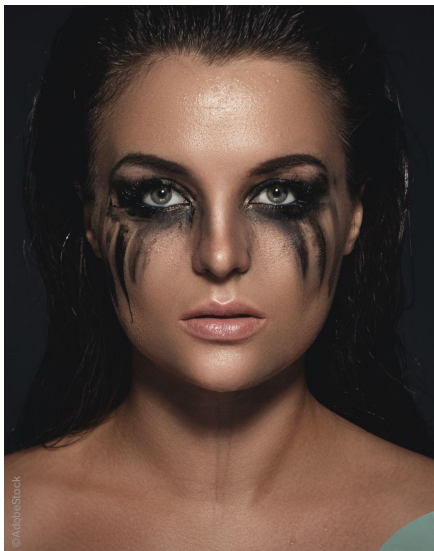




SKIN CARE

US20187 | #MAKEUPMELTDOWN CLEANSING BALM

Unique anhydrous balm texture removes makeup and impurities from your skin.



NATURALITY PROFILE according to ISO 16128 norm

© Air Liquide Seppic

Cleansing
—
Soothing
—
Moisturizing



A	EMOGREEN™ L19	7.48%
	Ricinus Communis (Castor) Seed Oil (and) Hydrogenated Castor Oil (and) Copernicia Cerifera (Carnauba) Wax	30.00%
B	MONTANOV™ L	5.00%
	C10-18 Triglycerides	15.00%
	Hydrogenated Olive Oil Stearyl Esters	15.00%
	Hydrogenated Olive Oil Decyl Esters)	15.00%
C	Butyrospermum Parkii (Shea) Butter	9.00%
	ANTILEUKINE 6™	2.00%
B	SEA STARWORT OIL	1.00%
	D&C No.27	0.02%
C	Fragrance "Mixed Berry"	0.50%

Pink Anhydrous Balm / Packaging: Jar

pH: N/A / VISCOSITIES: 1M at RT: N/A

Recovery at RT (after 1M at 45°C): N/A

STABILITY: Passed 3 month at RT, 45°C and 3 Freeze/Thaw cycles -5°C/+40°C

FORMULATION ADVICES: Laboratory scale - 300g

Combine phase A together and heat to 85 °C and mix well. Then while mixing slowly cool down the batch and at 55 °C add premixed of phase B. While mixing with U shape blade at 35°C add phase C. Continue mixing until room temperature.

A comforting anhydrous cleansing balm hydrating your skin as you remove your makeup!

Gently melts your makeup away!

MONTANOV™ L (C14-22 Alcohols and C12-20 Alkyl Glucoside) Natural emulsifying wax with dual benefits provides a **nice soft texture** and adds **moisturization benefits** to the skin.

A **natural emulsifier** made in France. Well-suited to formulate different textures (from **sprayable to butter** cream) no matter the nature or the quantity of oil phase. Due to its liquid crystal formulation enhanced moisturization, prevents the skin from dehydration (efficacy proven in vivo). COSMOS and Natrue approved.

EMOGREEN™ L19 (C15-19 Alkane (Plant-based & Renewable) offers a **non greasy, powdery skin feel** following application

A non polar alkane, **biodegradable** and bio-sourced emollient. A 100% **natural alternative to volatile silicone oils**.

ANTILEUKINE 6™ (Caprylic/Capric Triglyceride and Laminaria Ochroleuca Extract) Oil soluble active ingredient calms, comforts and soothes the skin.

Reducing redness on the skin. Ideal for **sensitive** skin. It is an **immediate soother** with **anti-aging benefits** that also improves skin quality. It **reinforces the basal state** of the skin and **protects** it from **UV, blue light** and **neurogenic** stress creating a Daily Soothing Shield!

SEA STARWORT OIL (Caprylic/Capric Triglyceride/Aster Tripollum Extract) oil soluble active reduces redness on the skin and providing immediate and long term moisture protection.

Essential for **sensitive skin**. Oil soluble active **protecting** and **repairing** the skin. This ingredient controls skin's blood microcirculation to **reduce the redness** of the skin (in vitro and in vivo studies) It also has the ability to **strengthen the barrier** function of the skin (by **boosting ceramides, cerebrosides, and cholesterol**) and provide **immediate and long term moisturization**.

ADDITIONAL INGREDIENTS: C10-18 Triglycerides: DUB CIRE H1 (DUBOIS) / Ricinus Communis (Castor) Seed Oil (and) Hydrogenated Castor Oil (and) Copernicia Cerifera (Carnauba) Wax; VEGELINE 65 (SOPHIM) / Hydrogenated Olive Oil Stearyl Esters; PHYTOWAX OLIVE 10140 (SOPHIM) / Hydrogenated Olive Oil Decyl Esters; PHYTOWAX OLIVE 18L57 (SOPHIM) / Butyrospermum Parkii (Shea) Butter; KARITE CP (SOPHIM) / D&C No. 27 (Sensient Colors Group), Fragrance Mix Berry 308296 (GOLD COAST)

More informations available on seppic.com

SEPPIC

All information contained herein is intended merely to demonstrate the utility of Seppic products, and should not be construed as granting license to practice any compositions or methods covered by a patent or a patent application. All information contained in this specific technical documentation is believed to be accurate and has been set up by Seppic according to its own described methods and processes. Seppic however does not assume any liability or risks involved in the use of its products for the preparation and the assessment of the hereinabove formulation since the condition of use are beyond its control. Seppic customer must insure that the duplication of the hereinabove formulation is not infringing any intellectual property rights and that it complies with any regulatory status.

A company
Air Liquide
HEALTH CARE