



EMOGREEN™ L19 takes care of you.

Formulas Booklet

SEPPIC

Ingredients that inspire

EMOGREEN™ L19

An unique refreshing & gliding sensation with a soft afterfeel...

EMOGREEN™ L19

*C15-19 Alkane**

*(*Plant-based & Renewable)*

appearance: crystal clear and colorless liquid

odor: odorless

use level: 0.50-50.00%

made in France 

regulatory status: Worldwide compliant* & QD Japan

versatile applications

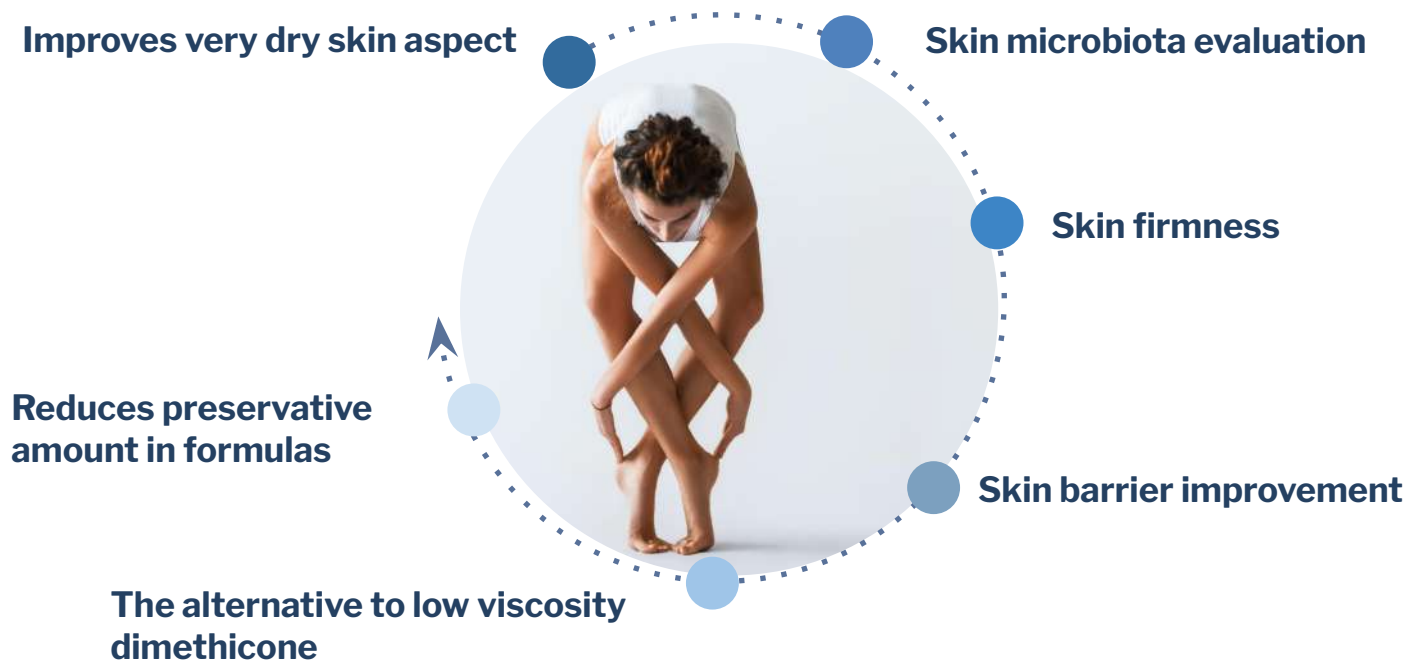
- skin care, make-up, sun care, cleanser, make-up remover, depilatory, deodorant, etc
- easy formulation and stabilization in very extreme condition (pH, oxidizing/reducing media, ...)

*For classical cosmetics & considering that the product is listed on the published IECIC for China.

- Unique **High Purity Alkane**
- **Readily Biodegradable (OECD 301B)**
- **Vegetable Origin, Non GMO**
- **Inert** and Non-polar Oil
- **Non comedogenic**
- **COSMOS, ECOCERT approved and NATRUE certified**
- **VEGAN** suitable
- **HALAL Certified**
- **100% natural origin content** (according to ISO 16128)
- Not classified for the environment ((EU) n°1272/2008 (CLP))



The perfect emollient for skincare





SKIN CARE

US20188 | WHIPPED UP BODY CREAM

A soft whipped body cream that moisturizes the skin



Whipped Texture

Deeply Moisturizing

Silky and Velvety Feel



A	D.I. Water	57.90%
	Yellow No. 5 solution 1%	0.30%
	Glycerin	3.00%
	AQUAXYL™	3.00%
	Phenoxyethanol & Ethylhexylglycerin	1.00%
B	SEPIMAX ZEN™	1.00%
C	EASYNOV™	3.00%
	Hydrogenated Olive Oil Stearyl Esters	15.00%
	C10-18 Triglycerides	5.00%
	EMOGREEN™ L19	8.00%
D	SEPIFINE™ BB	3.00%
	Lime Oil	0.30%

Light Yellow Whipped Cream / Packaging: Jar

pH: N/A

VISCOSITIES: 1M at RT: 7,750,000 cps Brookfield LVT 96 @ 0.6 rpm

Recovery at RT (after 1M at 45°C): 7,100,000 cps Brookfield LVT 96 @ 0.6 rpm

STABILITY: Passed 3 month at RT & 45°C, 3 F/T cycles -5°C/+40°C

FORMULATION ADVICES: Laboratory scale - 300g

Combine phase A and mix well and then add phase B and mix until a nice uniform gel is formed. Heat phase AB to 75°C. Combine phase C and heat to 75°C while gently agitated. Stop all mixing and pour phase C on top of phase AB. Start mixing using sweeper blade at 100 - 135 rpm for 10 minutes while maintaining temperature at 75°C and then homogenize the batch for 4 minutes at 4,000 rpm. After homogenization, cool down with sweeper to 50°C and add phase D. Continue to mix to ambient temperature.

Deeply moisturizes the skin with a fun and innovative whipped cream texture.
A fun formulation with a rich skin feel!

The combination of **SEPIMAX™ ZEN** and **EASYNOV™** is essential to achieve this Whip Cream texture.

SEPIMAX ZEN™ (Polyacrylate Crosspolymer-6) Pre-neutralized powder **polymeric thickener** providing **stabilizing effect**, particle suspension, electrolytes resistance and film-forming effect. It imparts **rich, velvet and elegant skin feel**.

EASYNOV™ Octyldodecanol and Octyldodecyl Xyloside and PEG-30 Dipolyhydroxystearate) A liquid lipophilic emulsifier. It allows you to develop **Water-in-Oil emulsions** providing a **soft** and **silky texture** with less of a sticky or tacky effect.

EMOGREEN™ L19 (C15-19 Alkane (Plant-based & Renewable) **unique high purity alkane** offering a **fresh and light glide** upon application with a **soft and powdery skin finish**.

A non polar alkane, **biodegradable** and bio-sourced emollient. A 100% **natural alternative to volatile silicone oils**.

SEPIFINE™ BB (Amylopectin) **provides a soft and velvety skin finish while creating a pleasant matte effect**.

A natural texturizing powder, ethically sourced, coming from babassu nut exclusively sourced in Brazil. This natural powder leaves a **soft and matte** skin aspect.

AQUAXYL™ (Xylitylglucoside & Anhydroxylitol & Xylitol) **the essential moisturization active and when combined with Glycerin showing increased immediate and long term moisturization results ! AQUAXYL™ 24 hour moisturization results @ 3% use level.**

Moisturizes and restructures the skin by harmonizing the hydric flow of the skin. In vivo testing results of +56% after 21 days when using Aquaxyl™ at 1.5%(min) and Glycerin at 3%.

ADDITIONAL INGREDIENTS: Phenoxyethanol - Ethylhexylglycerin: EUXYL® PE9010 (SCHULKE) / Lime Oil RM197350 (ISOZIO) Glycerin (Natural Sourcing LLD), Yellow No. 5 Solution 1% (Sensient) / C10-18 Triglycerides: DUB CIRE HI (DUBOIS) / Hydrogenated Olive Oil Stearyl Esters: PHYTOWAX OLIVE 188LS7 (SOPHIM)

SEPPIC

All information contained herein is intended merely to demonstrate the utility of Seppic products, and should not be construed as granting license to practice any compositions or methods covered by a patent or a patent application. All information contained in this specific technical documentation is believed to be accurate and has been set up by Seppic according to its own described methods and processes. Seppic however does not assume any liability or risks involved in the use of its products for the preparation and the assessment of the hereinabove formulation since the condition of use are beyond its control. Seppic customer must insure that the duplication of the hereinabove formulation is not infringing any intellectual property rights and that it complies with any regulatory status.

A company
Air Liquide
HEALTH CARE



EU07605B | HAPPY SKIN

Inside & Out concept



NATURALITY
PROFILE
according to
ISO 16128 norm



Inside & out concept

Emotional Beauty

Foamy

A	Aqua/Water	Up to 100%
	Glycerin	2.00%
	SEPIMAX ZEN™	0.75%
	Sodium Hydroxide 6%	0.03%
	ORAMIX™ CG 110	0.40%
B	MONTANOV™ 202	3.00%
	LANOL P	1.00%
	EMOGREEN™ L19	8.00%
	Butyrospermum Parkii Butter	1.00%
	Prunus Amigdalus Dulcis Oil	1.00%
C	CERAMOSIDES™ HP	0.20%
	Tocopherol	0.20%
D	Preservative	1.00%
	Fragrance	0.15%
	Colorant	0.35%

Pink foamy emulsion / Challenge test: Criteria A / Packaging: Jar

pH: 5.5 / STABILITY: M1 at RT, 45°C

FORMULATION ADVICES / Laboratory scale - 300g - Silverson Rotor stator
Weigh and heat phase B at 85°C. (TIMECODE™ remains dispersed since its melting point is 92°C). Weigh phase A except for SEPIMAX ZEN™ in a large beaker and heat to 80°C. Put it under rotor-stator. Add SEPIMAX ZEN™ and start to stir during 2 min at 3000 rpm. Maintain the beaker in a hot water bath. In parallel, add phase C in melted phase B. Mix a little bit with the spatula. Maintain in the hot water bath. Remove beakers from hot water bath. Add phase (B+C) into A and homogenize with rotor-stator until obtention of an homogeneous cream (4 to 6 min at 4000 rpm - incorporating the maximum content of air). Cool down under anchor at 100 rpm for 10 min. Add one by one phase D ingredients under rotor-stator (4000 rpm). A thick pink formula with small air bubbles is obtained. Wait for 24h to 48h to get the final bubble size.

Happy Skin is a new well-being experience, addressing skin & mind through emotion. Efficacy is realized by a face cream & nutritive gummies for a global inside & out routine.

A holistic approach of beauty!

A combination of two actives : **CERAMOSIDES™ HP** protects the skin from loss of elasticity & **TIMECODE™** which targets key aging markers.

CERAMOSIDES™HP (Glycosphingolipids & Glycolipids) : It is an original combination (patented) of natural CERAMIDES and OMEGAs which protect the skin from the loss of elasticity. After 28 days of application, the complexion is fresher, the pores are visibly smaller.

TIMECODE™ (Palmitoyl Glycine) : The best ally against inflamm'aging, it targets the aging key markers. Lifted and firmed up, the skin reveal a new radiance!

ORAMIX™ CG 110 creates air bubbles. (Caprylyl / Capryl Glucoside)

Non-ionic surfactant from vegetable origin. Ecocert, Cosmos and Natrue approved.

SEPIMAX ZEN™ allows air bubble stabilization to create this foam texture thanks to **its suspension properties**. (Polyacrylate Crosspolymer-6)

It is a high performance stabilizing and thickening polymer. It imparts rich, velvet and elegant skin feel.

LANOL P also supports the **foamy emulsion stability**. (Glycol Palmitate)

MONTANOV™ 202 creates this airy emulsion but also **supports skin moisturization over time by promoting liquid crystals**.

(Arachidyl Alcohol and Behenyl Alcohol and Arachidyl Glucoside)

It is a glycolipid emulsifier derived from natural origin. Ecocert and Natrue approved.

EMOGREEN™ L19 optimizes the application playtime while **leaving a soft and powdery skin feel**.

(C15-19 Alkanes)

Plant-based & biodegradable alternatives to silicone oils.

ADDITIONAL INGREDIENTS: Butyrospermum Parkii Butter - KARITE OR (SOPHIM) / Prunus Amigdalus Oil - HUILE VIERGE D'AMANDE DOUCE (BERTIN) / Tocopherol - ALPHA TOCOPHEROL (BASF) / Preservative: Sodium Benzoate - Potassium Sorbate - EUXYL K712 (SCHULKE AND MAYR) / Fragrance : Delice de Figue - (TECHNIFLOR) / Colorant : CI 17200 (solution at 1%) (SENSIENT)

For a Global Beauty routine, combine Happy Skin face care with nutritive gummies containing CERAMOSIDES™ (nutrition grade).



A formula related to **HAPPY COSMETIC** concept.

More informations available on seppic.com

SEPPIC

All information contained herein is intended merely to demonstrate the utility of SEPPIC products, and should not be construed as granting license to practice any compositions or methods covered by a patent or a patent application. All information contained in this specific technical documentation is believed to be accurate and has been set up by SEPPIC according to its own described standards and processes. SEPPIC however does not assume any liability or risks involved in the use of its products for the preparation and the assessment of the hereinabove formulation since the condition of use are beyond its control. SEPPIC customer must insure that the duplication of the hereinabove formulation is not infringing any intellectual property rights and that it complies with any regulatory status.

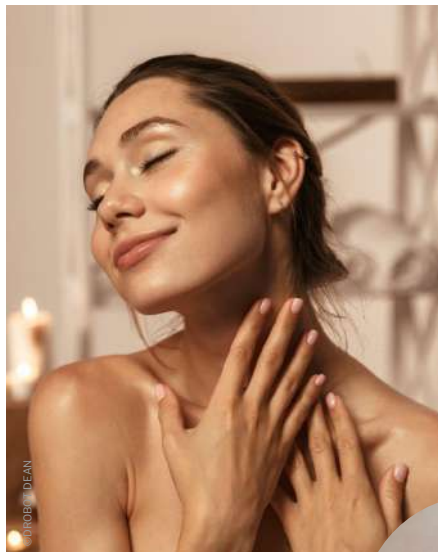
Air Liquide
HEALTH CARE

A company



EU07756 | COSMOS GLIDING DROP

A natural soothing & refreshing skincare.



NATURALITY
PROFILE
according to
(ISO 16128 norm)

Fresh water drop

Soothes the skin
after UV exposure

Antioxidant

A	Water	Up to 100%
	Colorant	0.03 %
B	EMOGREEN™ L19	10.00%
	ANTILEUKINE 6™	2.00%
	EPHEMER™	1.00%
	Fragrance	0.20%
	SOLAGUM™ AX	1.00%
	SOLAGUM™ TARA	0.10%
C	Preservative	1.00%

Blue light lotion / Packaging: Pump

pH: 5.0

VISCOSITIES: 1M at RT: 15,800 mPa.s Brookfield M4V6

STABILITY: 1M at RT

FORMULATION ADVICES: Laboratory scale - 300 g - Defloculator

Weigh and mix phase B with a spatula. Heat the water with the colorant at 60 °C (phase A) and add it into the phase B under agitation Rayneri (1000 rpm, 10 min). Then add phase C and mix under Silverson (2000 rpm, 2min) to obtain a uniform cream gel.



Cool down rapidly your skin with this natural unique sensoriality serum !

Spread this soothing cream-gel for fresh sensations !

SOLAGUM™ AX and SOLAGUM™ TARA, the perfect duo from 100 % natural origin bringing stability, viscosity and texture !

SOLAGUM™ AX (Acacia Senegal Gum - Xanthan Gum) brings a **soft and non-sticky after-feel** and a **moisturizing sensory** to this serum.

Smart combination of **natural thickening polymers**. It allows to formulate non-stringy translucent gels with intermediate viscosity. SOLAGUM™ AX also offers better stabilizing effect than xanthan gum while ensuring easy spreading and film forming effect.

At only 0.10 %, **SOLAGUM™ TARA** (Caesalpinia Spinosa Gum) **increases the viscosity** of this serum and **brings texture**.

A powerful thickening natural gum from Caesalpinia spinosa endosperm seeds. Synergistic efficiency with synthetic and natural polymers.

A soft and dry after-feel with **EMOGREEN™ L19!** (C15-19 Alkane (Plant-based & Renewable))

This **non polar & biodegradable, bio-sourced emollient** is an alternative to silicone oils. Beyond the lightweight and non-greasy finish, it gives a gliding sensation.

Limit sun damages on the skin with **ANTILEUKINE 6™ & EPHEMER™**:

ANTILEUKINE 6™ soothes and protects after UV exposure! (Caprylic/Capric Triglyceride and Laminaria Ochroleuca Extract): **Protector & soothing active**, oily soluble, which regulates the inflammation mediators of the skin. It is an immediate soother after an UV exposition.

EPHEMER™ (Caprylic/Capric Triglyceride and Undaria Pinnatifida Extract): Extract of gametophytes, macroalgae cells of Undaria Pinnatifida, from CELEBRITY™ technology, for an immediate and long lasting antioxidant effect.

ADDITIONAL INGREDIENTS : Fragrance : ZESTE PETILLANT (PAYAN-BERTRAND) / Preservative : Dehydroacetic Acid (and) Benzyl Alcohol : GEOGARD 221 (LONZA) / Colorant : 0,03% FD&C Blue#1 Solution 1%

More informations available on seppic.com

* Data provide from OECD tests, QSAR calculations, products SDS and literature.

SEPPIC

All information contained herein is intended to demonstrate the utility of Seppic products, and should not be construed as granting license to practice any compositions or methods covered by a patent or a patent application. All information contained in this specific technical documentation is believed to be accurate and has been set up by Seppic according to its own described methods and processes. Seppic however does not assume any liability or risks involved in the use of its products for the preparation and the assessment of the hereinabove formulation since the condition of use are beyond its control. Seppic customer must insure that the duplication of the hereinabove formulation is not infringing any intellectual property rights and that it complies with any regulatory status.

A company
Air Liquide
HEALTH CARE



EU07645 | SUSTAINABLE MINIMALIST MILK

Reduce the number of ingredients, increase efficiency and naturality!



NATURALITY
PROFILE
according to
ISO 16128 norm



Minimalist milk
Moisturizing
Sensitive skins

A	Aqua/Water	Up to 100%
B	MONTANOV™ 202	2.00%
	EMOGREEN™ L19	10.00%
	LANOL P	1.00%
C	SIMULGEL™ NS	1.00%
D	CODIAVELANE™ BG PF	2.00%
	Phenoxyethanol and	1.00%
	Ethylhexylglycerin	
	NaOH 6%	Up To pH

Cream-gel White Fluid / Packaging : jar

pH : 5,8 / **VISCOSITIES** : 30.000mPa.s S4S6
Recovery at RT 28000 mPa.s S4S6
STABILITY : 1M at TA & 45°C.

FORMULATION ADVICES : Laboratory - 200 g - Silverson

Heat the water in the tank to 75°C. Add **Simulgel™ NS**. Heat phase B at 85°C and add it to the mix. Emulsify for 4 min at 4000 rpm with a Silverson. Cool down for 10 min at 100 rpm with an anchor. Add phase D and homogenize for 1 min at 4000 rpm thanks to a Silverson. In a cold water bath, mix for 10 min at 100 rpm with an anchor.

**Minimalist milk with a light and soft skin feel,
with a high percentage of natural origin
for sensitive skins.**

Soft milk which protects your skin and the planet!

Promoter of liquid crystals, MONTANOV™ 202 hydrate the skin overtime.
(Arachidyl Alcohol - Behenyl Alcohol - Arachidyl Glucoside)
Glucolipid emulsifier derived from vegetable origin. **Ecocert and Natrue approved.**

EMOGREEN™ L19 meets the needs of very dry and sensitive skin by improving the appearance of the skin: more hydrated, softer and smoother.
(C15-19 Alkane) ("Plant-based & Renewable")
Bio-sourced and readily biodegradable non polar emollient, Cosmos approved and Natrue certified. It leaves a **comfortable afterfeel**.

Acting as a texturing agent, LANOL P improves the consistency of the formula.
(Glycol Palmitate)
It brings **soft skin feel**, without any soaping effect.

SIMULGEL™ NS thickens the formula while bringing an excellent tolerance even for irritated skin.
(Hydroxyethyl Acrylate/Sodium Acryloyldimethyl Taurate Copolymer - Squalane - Polysorbate 60)
Pre-neutralized liquid polymeric thickener. Usable in a wide range of pH (3 to 12). It provides also **excellent oil stabilizing effect**. It is used to develop formulas of any consistency, with a **fresh and melting skin feel**. **SIMULGEL™ NS** has **57% natural origin** content according to ISO 16128.

CODIAVELANE™ BG PF facilitate high hydration by its richness in marine sugars.
(Butylene Glycol - Aqua/Water - Codium Tomentosum Extract)
An active water-soluble extract of Codium Tomentosum also called "velvet algae".

ADDITIONAL INGREDIENTS: Phenoxyethanol and Ethylhexylglycerin: EUXYL PE 9010 (SCHÜLKE & MAYR)

More informations available on [seppic.com](https://www.seppic.com)

* Data provide from OECD tests, QSAR calculations, products SDS and literature.



EU07655 | COLD CREAM 2.0

Rich but not greasy!



NATURALITY
PROFILE
according to
ISO 16128 norm



Thick texture

Pleasant gliding

Non-greasy

A	Aqua/Water	Up to 100%
	ORAMIX™ CG 110	0.25%
	Glycerin	3.00%
B	MONTANOV™ L	2.00%
	EMOGREEN™ L19	15.00%
	LANOL 2681	10.00%
	Caprylic/Capric Triglyceride	10.00%
	Cera Alba	4.00%
	LANOL P ECAILLES	2.00%
C	SEPINOV™ EMT 10	1.00%
	SOLAGUM™ AX	0.50%
D	AQUAXYL™	1.50%
	Rosa Damascena Flower Water -	2.00%
	Citric Acid - Sodium Benzoate -	
	Potassium Sorbate	
	Benzyl Alcohol and Dehydroacetic Acid	0.80%
	Fragrance	0.07%
	Tocopherol	0.10%

Thick Emulsion / Packaging: Jar

Challenge test: Criteria A

pH: 5.0 / **VISCOSITIES:** 1M at RT: 10,000 - 90,000 mPa.s Brookfield M7V5 / **Recovery at RT (after 1M at 45°C):** 10,000 - 90,000 mPa.s Brookfield M7V5. **STABILITY:** 1M at RT, 45°C, cycles -5°C/+40°C.

FORMULATION ADVICES: Laboratory scale - 500 g - Silverson

Prepare and heat to 75°C phase B and phase A separately. Add phase C to phase A and homogenize under Silverson to form a gel. Emulsify under direct process, that is to say: pour phase B into phase A slowly under Silverson at 4000 rpm for 4 minutes. Then, cool down under anchor to 40°C and add the ingredients of phase D one by one.

The best ally to take care of your hands!

SEPINOV™ EMT 10 imparts satiny, fresh skin feel and excellent oil stabilizing properties!

(Hydroxyethyl Acrylate/Sodium Acryloyldimethyl Taurate Copolymer)

Pre-neutralized powder polymeric thickener on a wide pH range (3-12). Excellent tolerance even for baby care, irritated skin.

SOLAGUM™ AX stabilises up to 15% of the oil phase. (Acacia Senegal Gum and Xanthan Gum)

Smart combination of natural thickening polymers. **Ecocert** and **Natru** approved.

ORAMIX™ CG 110 helps to reach a perfect stability.

(Caprylyl/Capryl Glucoside)

Non-ionic surfactant from vegetable origin. **Ecocert**, **Cosmos** and **Natru** approved.

MONTANOV™ L stabilises up to 40% of oil phase. (C14-22 Alcohols and C12-20 Alkyl Glucoside)

Glucolipid emulsifier. **Ecocert** and **Natru** approved.

EMOGREEN™ L19 gives a fresh and gliding touch with a soft afterfeel.

(C15-19 Alkane) (*Plant-based & Renewable)

It is a non polar and biodegradable, bio-sourced emollient. This high purity vegetable alkane is conformed to **Cosmos** and **Natru** approved.

In addition to a soft and light touch, LANOL 2681 contributes to a non-greasy finish. (Coco-Caprylate/Caprate)

Emollient agent from vegetable origin. Polar ester. **Cosmos** approved.

Without any soaping effect, LANOL P ECAILLES brings thickness to the texture. (Glycol Palmitate)

Texturing agent.

AQUAXYL™ moisturizes and restructures the skin by harmonizing the hydric flow of the skin. (Xylitylglucoside and Anhydroxylitol and Xylitol)

Cosmos and **Natru** approved.

ADDITIONAL INGREDIENTS: Caprylic/Capric Triglyceride: TRIGLYCERIDE CAPRIC/CAPRYLIC (BERTIN) / Cera Alba: BEE WAX (TOURACOI) / Rosa Damascena Flower Water - Citric Acid - Sodium Benzoate - Potassium Sorbate: HYDROLAT DE ROSE (HERBAROM) / Benzyl Alcohol and Dehydroacetic Acid: GEOGARD 221 (LONZA) / Fragrance: ALOE BAMBOO HYDRO (EXPRESSIONS PARFUMES) / Tocopherol: DL ALPHA TOCOPHEROL (BASF).

A formula related to Breathtaking Rituals concept

More informations available on seppic.com

* Data provide from OECD tests, QSAR calculations, products SDS and literature.

SEPPIC

All information contained herein is intended merely to demonstrate the utility of Seppic products, and should not be construed as granting license to practice any compositions or methods covered by a patent or a patent application. All information contained in this specific technical documentation is believed to be accurate and has been set up by Seppic according to its own described methods and processes. Seppic however does not assume any liability or risks involved in the use of its products for the preparation and the assessment of the hereinabove formulation since the condition of use are beyond its control. Seppic customer must insure that the duplication of the hereinabove formulation is not infringing any intellectual property rights and that it complies with any regulatory status.

Air Liquide
HEALTH CARE



AS40196B | WHEAT ESSENTIAL CERAMOSIDES OIL

The best for your skin needs.



Oil



NATURALITY
PROFILE*
according to
ISO 16 128 norm



Firmness protection
Antioxidant efficacy
Hydration & Glow

A	CERAMOSIDES™ HP	0.20%
	EMOGREEN™ L19	50.00%
	Caprylic/Capric Triglyceride	15.00%
B	Simmondsia Chinensis (Jojoba) Seed Oil	10.00%
	Prunus Amygdalus Dulcis (sweet almond) Oil	24.60%
C	Tocopheryl acetate	0.20%

Yellow Clear Liquid Oil / Packaging: Dropper

VISCOSITIES: 1M at RT: < 50 mPa.s Brookfield LV1-6 /
Recovery at RT (after 1M at 45°C): <50 mPa.s Brookfield LV1-6.
STABILITY: M1 at RT, 45°C, 4°C and cycles -5°C/+40°C.

FORMULATION ADVICES:

Mix phase A well, heat it with 65–70°C water bath and stir it till CERAMOSIDES™ HP dissolves well. Add ingredients of phase B and C in phase A separately and stir the system under cross paddle stirring 150 rpm for 10 min or till uniform.

Fresh complexion and visibly beautiful skin thanks to the CERAMOSIDES™ HP.

Because your skin deserve it !

CERAMOSIDES™ HP (Glycosphingolipids & Glycolipids)

The essence of perfect skin. CERAMOSIDES™ HP are an original combination (patented) of **natural CERAMIDES and OMEGAs** which protect the skin from the loss of elasticity, one of the primary causes of enlarged pores with age. After 28 days of application, the complexion is fresher, the pores are visibly smaller.

EMOGREEN™ L19 (C15-19 Alkane (Plant-based & Renewable))

EMOGREEN™ L15 is a non polar and biodegradable, plant-based emollient. It's **THE alternative to volatile silicone oils**. This high purity vegetable alkane is conformed to Cosmos and Natrue. Beyond the lightweight and non-greasy skin feel, it gives a powdery finish. Inert and stable, it can be used in all types of applications, even in extreme conditions (pH, oxidizing/reducing media...)

ADDITIONAL INGREDIENTS: Simmondsia Chinensis (Jojoba) Seed Oil - DW Jojoba Golden (Vantage) / Prunus Amygdalus Dulcis (sweet almond) Oil (BERTIN) / Tocopheryl Acetate - dl- α -Tocopheryl Acetate (DSM)

* Data provide from OECD tests, QSAR calculations, products SDS and literature.



EU07771 | BEACH SOLAR SUNSCREEN

SPF 50+ (in vitro tested)



NATURALITY
PROFILE
according to
ISO 16128 norm



SPF 50+ (in-vitro)
Easy application
Moisturizing

A	Water	Up to 100%
	Glycerin	3.00%
	NaOH 12 %	QS pH 7
B	SENSANOV™ WR	1.00%
	MONTANOV™ 82	2.00%
	LANOL™ 37T	11.00%
	EMOGREEN™ L19	11.00%
	Bis-ethylhexyloxyphenol methoxyphenyl triazine	10.00%
	Diethylamino hydroxybenzoyl hexyl benzoate	10.00%
	Ethylhexyl salicylate	5.00%
B'	SEPI LIFE™ NUDE	1.00%
C	Water	3.00%
	SEPI FINE™ BB	1.00%
D	AQUAXYL™	1.50%
	ANTILEUKINE 6™	2.00%
	Perfume	0.15%
	Calcium aluminium sorosilicate and silica and titanium dioxide and tin oxide	0.75%
	Preservatives	1.00%

Yellow cream / Packaging: Tube

pH: 5.5/ VISCOSITIES: 1M at RT: 38500 cps Brookfield M4V6

Recovery at RT (after 1M at 45°C): 53000 cps Brookfield M4V6

STABILITY: 1 month at RT

FORMULATION ADVICES: Laboratory scale - 200g - Silverson

In the main beaker, weigh out phase B. Heat to 80°C in a water bath, mix with a spatula. Heat the water in a kettle. Weigh phase A in another beaker, mix with a spatula. Ensure that the filters are completely melted. Add phase B' to B just before emulsification, mix with a spatula. When both phases are at 80°C, pour phase A into phase B' in one go. Emulsify 4 min at 4000 rpm with Silverson. Cool for 20 min at 100-200 rpm with a Heidolph equipped with an anchor. Place in a water bath after 10 min. Add phase C then phase D after 2 min in water bath, continue cooling. Adjust the pH to 5.5.

Apply generously to protect yourself.

A more ocean-friendly sunscreen formula!

Developed with a high content of fat-soluble UV filters, often associated with 'reef-safe' labels, and with a water-resistant emulsifier, **SENSANOV™ WR**, this formula has been optimised to reduce its solubilisation in water and therefore its potential environmental impact on ocean ecosystems.

SENSANOV™WR (C20-22 Alkyl Phosphate and C20-22 Alcohols) It also makes it easy to formulate stable suncare products (texture, filter dispersion, protection index, etc.). Multi-purpose phosphate anionic emulsifier effective at low dosage (1 to 3%). Provides a sensation of lightness, a matte and velvety veil that slowly envelops the skin.

MONTANOV™ 82 (Cetearyl Alcohol and Coco-Glucoside) It also makes it easy to formulate stable suncare products (texture, filter dispersion, protection index, etc.). Approved by Ecocert, Cosmos and Natrue.

LANOL™ 37T (Triheptanoin) is a good solubiliser of organic sunscreens.

EMOGREEN™ L19 (C15-19 Alkane) is a non-polar, biodegradable emollient of vegetable origin. It gives a fresh and slippery touch with a soft finish.

SEPI LIFE™ NUDE (Sodium Acrylate/Sodium Acryloyl Dimethyl Taurate Copolymer and C15-19 Alkane and Polyglyceryl-6 Laurate and Polyglycerin-6) Pre-neutralised liquid polymer and thickener over a wide pH range (5.5 to 12), it can also be used to emulsify and stabilise all types of fatty phases using a cold process

SEPI FINE™ BB (Amylopectin) A natural texturising powder made from the ethically and sustainably grown and harvested babassu nut in Brazil. This biodegradable powder provides a soft and velvety finish to the skin while creating a pleasant playtime with a mattifying effect.

AQUAXYL™ (Xylitylglucoside and Anhydroxylitol and Xylitol) Thanks to a harmonization of the cutaneous water flows, AQUAXYL™ hydrates and restructures the skin. Water reserves are instantly increased, water circulation is boosted in all skin layers and water loss is reduced (proven in vitro and in vivo)

ANTILEUKINE 6™ (Caprylic/Capric Triglyceride and Laminaria Ochroleuca Extract) An active ingredient that reinforces the skin's basal state and protects it from UV, blue light and neurogenic stress, it is an immediate soother with anti-ageing benefits that also improves skin quality. The perfect Daily Soothing Shield for your skin!

ADDITIONAL INGREDIENTS: Glycerin CODEX/Bis-ethylhexyloxyphenol methoxyphenyl triazine BASF/Diethylamino hydroxybenzoyl BASF/Ethylhexyl salicylate MERCK/Fragrance Payan Bertrand/Calcium aluminium borosilicate & Silica & titanium dioxide & tin oxide MERCK/Phenoxyethanol & Ethylhexylglycerin DKSH

* Data provide from OECD tests, QSAR calculations, products SDS and literature.

SEPPIC

All information contained herein is intended merely to demonstrate the utility of Seppic products, and should not be construed as granting license to practice any compositions or methods covered by a patent or a patent application. All information contained in this specific technical documentation is believed to be accurate and has been set up by Seppic according to its own described methods and processes. Seppic however does not assume any liability or risks involved in the use of its products for the preparation and the assessment of the hereinabove formulation since the condition of use are beyond its control. Seppic customer must insure that the duplication of the hereinabove formulation is not infringing any intellectual property rights and that it complies with any regulatory status.

A company
Air Liquide
HEALTH CARE



HYGIENE

AS40171 | JAPAN'EASE CLEANSING OIL

Traditional make-up remover routine



Oil

NOC =
96.4%NATURALITY
PROFILE
according to
ISO 16128 norm

Light skin feel
—
Refreshing and gliding
sensation
—
Soft after feel

A	LANOL 14M	3.00%
	MONTANE™ 80 VG	1.00%
	LANOL 2681	20.00%
	EMOGREEN™ L19	33.45%
	Prunus Amygdalus Dulcis (Sweet Almond) Oil	40.00%
	Tocopherol	0.15%
	ANTILEUKINE 6™	2.00%
	Fragrance	0.40%

Fluid / Packaging: Dropper

Challenge test: Criteria A

STABILITY: 1M & 3M at RT, 45°C, cycles -5°C/+40°C.**FORMULATION ADVICES: Pilot scale - 5 Kg - Propeller stirrer**

Add **LANOL 14M** to **EMOGREEN™ L19** and heat it to 60°C. Mix it with a propeller stirrer until cooling down to room temperature. Add other ingredients and stir until the mix is uniform.

**All the benefits of the traditional double cleansing in
only one simple formula!**

EMOGREEN™ L19 provides strong make-up removal properties while bringing a fresh and gliding touche. (C15-19 Alkane (Plant-based & Renewable))

It is a non polar and biodegradable, bio-sourced emollient. It's THE alternative to silicone oils. This high purity vegetable alkane is conformed to **Cosmos** and **Natru**. It gives a soft afterfeel. Inert and stable, it can be used in all types of applications, even in extreme conditions.

MONTANE™ 80 VG creates a very light emulsion when rinsing for a bare skin feel. (Sorbitan Oleate)

Emulsifies all types of oil in combination with a hydrophilic emulsifier.

LANOL 14M gives substance and a rich feel to oil-to-milk textures.

(Myreth-3 Myristate)

This Waxy texturizing agent melts in contact with skin and brings softness and smoothness during application.

With soft and light touch, **LANOL 2681** provides a non greasy finish.

(Coco-Caprylate/Caprate)

Emollient agent from vegetable origin. Polar ester with medium playtime. **Cosmos** approved.

Oily soluble, ANTILEUKINE 6™ protects and soothes the skin. (Caprylic/Capric Triglyceride and Laminaria Ochroleuca Extract)

Active which regulates the inflammation mediators of the skin. It is an immediate soother which also improves hydration and protects skin from photo-aging. **Cosmos** and **Natru** approved.

ADDITIONAL INGREDIENTS: Prunus Amygdalus Dulcis (Sweet Almond) Oil; LIPOVOL ALM (VANTAGE) / Tocopherol; TOCOPHEROL (DSM) / Fragrance: Frag61304865 (DROM).

A formula related to Breathtaking Rituals concept

More informations available on seppic.com

* Data provide from OECD tests, QSAR calculations, products SDS and literature.

SEPPIC

All information contained herein is intended merely to demonstrate the utility of Seppic products, and should not be construed as granting license to practice any compositions or methods covered by a patent or a patent application. All information contained in this specific technical documentation is believed to be accurate and has been set up by Seppic according to its own described methods and processes. Seppic however does not assume any liability or risks involved in the use of its products for the preparation and the assessment of the hereinabove formulation since the condition of use are beyond its control. Seppic customer must insure that the duplication of the hereinabove formulation is not infringing any intellectual property rights and that it complies with any regulatory status.

A company
Air Liquide
HEALTHCARE



HYGIENE

EU07762 | DEODORANT BALM

COSMOS & Waterless !

NATURALITY
PROFILE
according to
ISO 16128 norm

Melting Balm

COSMOS Texture

Bare Skin Effect

A	EMOGREEN™ L19	50.70%
	MONTANOV™ 202	5.00%
	Hydrogenated Olive Oil Cetyl Esters	10.00%
	Cera Alba	5.00%
	LIPACIDE™ UG	1.00%
<hr/>		
B	SEPIFINE™ BB	10.00%
	Oryza Sativa (Rice) Powder	15.50%
	Zinc Oxide	2.50%
<hr/>		
C	Fragrance	0.30%

White Solid Wax / Packaging: Pot

STABILITY : 3M at RT

FORMULATION ADVICES : Laboratory Scale - 50 g

Weigh phase A in a beaker and melt it in a water-bath at 80-90°C. Remove the beaker from the water-bath and add powders and the fragrance. Homogenize with a spatula, then pour it at 70°C into the jar.

A waterless deodorant with a balm texture for a convenient and environmentally friendly application!

Its rich texture melts on contact with the skin and leaves a bare skin effect !

MONTANOV™ 202 (Arachidyl Alcohol and Behenyl Alcohol and Arachidyl Glucoside) **stabilizes this balm while bringing cohesion !**

Due to its liquid crystal promoting capabilities, this glycolipid emulsifier **regulates the stability** of the formula by **maintaining hydration**.

EMOGREEN™ L19 (C15-C19 Alkane)

It's THE alternative to silicone oils. This non polar and biodegradable, bio-sourced emollient gives a **fresh and gliding touch**, with a **soft afterfeel**. It is the ideal ally for **very dry and sensitive skin** : a better appearance, a more balanced skin microbiota and a renewed feeling of comfort.

SEPIFINE™ BB (Amylopectin) **creates a pleasant playtime and a matte effect!**

A natural **texturizing powder**, ethically sourced, coming from **babassu nut** exclusively sourced in Brazil. This biodegradable powder provides a **soft, velvety finish** to the skin, while **absorbing oil from the formula**.

LIPACIDE™ UG (Undecylenoyl Glycine)

Dermo-protective thanks to its natural acid structure, LIPACIDE™ UG protects the skin's acid mantle. It brings an **efficient and gentle deodorant activity** while **respecting the arm pit's sensitive skin area**. Ecocert approved.

ADDITIONAL INGREDIENTS : Hydrogenated Olive Oil Cetyl Esters : Phytowax 16L55 (SOPHIM) / Cera Alba : CERABEIL BLANC DAB (CERESINE) / Oryza Sativa (Rice) Powder : Rice Powder (DAITO KASEI) / Zinc oxide : Rhonacare Zinc Oxide (MERCK) / Fragrance : Pureté aquatique (Payan Bertrand)

More informations available on [seppic.com](https://www.seppic.com)

SEPPIC

All information contained herein is intended merely to demonstrate the utility of Seppic products, and should not be construed as granting license to practice any compositions or methods covered by a patent or a patent application. All information contained in this specific technical documentation is believed to be accurate and has been set up by Seppic according to its own described methods and processes. Seppic however does not assume any liability or risks involved in the use of its products for the preparation and the assessment of the hereinabove formulation since the condition of use are beyond its control. Seppic customer must insure that the duplication of the hereinabove formulation is not infringing any intellectual property rights and that it complies with any regulatory status.

A company
Air Liquide
HEALTH CARE



EU07610A | INSTA SHIELD FOUNDATION

Light tinted O/W emulsion



NOC =
98.5%
NATURALITY
PROFILE
according to
ISO 16128 norm



Multi-protective
foundation
Natural coverage
Insta-ready complexion

A	Aqua/Water Glycerin Titanium Dioxide - Phytic Acid - Sodium Hydroxide Iron Oxides Red - Phytic Acid - Sodium Hydroxide Iron Oxides Yellow - Phytic Acid - Sodium Hydroxide Iron Oxides Black - Phytic Acid - Sodium Hydroxide	Up to 100% 3.00% 8.00% 0.24% 0.68% 0.09%
B	SOLAGUM™ AX SEPIMAX ZEN™ SEPIFINE™ BB	0.20% 0.40% 2.00%
C	FLUIDIFEEL™ EASY LANOL 2681 EMOGREEN™ L19 Parfum/Fragrance	2.00% 2.00% 5.00% 0.20%
D	AQUAXYL™ SAKADIKIUM™ EPHEMER™ Phenoxyethanol - Ethylhexylglycerin Sodium Hydroxide (12% solution)	1.50% 3.00% 1.00% 1.00% 0.02%

Light brown fluid / Challenge test: Criteria A / **Packaging: Dropper**
pH: 6.0 / **VISCOITIES: 1M at RT:** 5,000 mPa.s Brookfield LV3-6 /
Recovery at RT (after 1M at 45°C): 4,500 mPa.s Brookfield LV3-6
STABILITY: 3M at RT, 45°C.

FORMULATION ADVICES: Laboratory scale - 300 g - Silverson Rotor-stator

At room temperature, weigh phase C. Add phase B into phase C. Mix all phase A ingredients with spatula and add it into phase (B + C). Stir for 4 min at 4000 rpm with rotor stator. Add all phase D. Stir for 2 min at 4000 rpm with rotor stator.



COLD
PROCESS

This multi-protective foundation prevents the exposome effects and offers a second skin like & light texture for a natural digital look.

FLUIDIFEEL™ EASY (Lauryl Glucoside and Myristyl Glucoside and Polyglyceryl-6 Laurate) is highly compatible with hydrophilic pigments. It gives this **light, comfortable, soft and nude skin feel**, and create this "serum-like" texture. O/W sustainable emulsifier, creating formulas with very low viscosity.

The combination of **SOLAGUM™ AX** (Acacia Senegal Gum and Xanthan Gum) and **SEPIMAX ZEN™** (Polyacrylate Crosspolymer-6) stabilizes this very low viscosity foundation with a high content of natural origin ingredients. Both have an excellent compatibility with hydrophilic pigments.

EMOGREEN™ L19 (C15-19 Alkane (Plant-based & Renewable)) gives a unique **gliding** sensation when applying the foundation and a **powdery and soft finish**. The alternative to volatile silicone oils offering **lightweight and non-greasy skin feel**. **LANOL 2681** ((Coco-Caprylate/ Caprate) takes also part to the **non greasy skin feel** of this tinted emulsion.

SEPIFINE™ BB (Amylopectin) is a natural biodegradable texturizing powder which provides a **soft, velvety and matt skin finish**, perfect to be insta-ready!

SAKADIKIUM™ (Aqua / Water and Glycerin and Hedychium Coronarium Root Extract) is a concentrated extract of sugars from the rhizomes of Hedychium Coronarium, providing the **multiprotector effect against UV, IR, blue light and pollution to the foundation**. It also **enhances skin brightness**.

EPHEMER™ (Caprylyl/Capric Triglyceride and Undaria Pinnatifida Extract) provides an immediate and long lasting **antioxidant effect**.

AQUAXYL™ (Xylitylglucoside and Anhydroxylitol and Xylitol) gives **moisturizing** properties to this foundation, harmonizing the hydric flow of the skin, boosting water reserves, improving water circulation in all skin layers and reducing water loss.

ADDITIONAL INGREDIENTS: Titanium Dioxide and Phytic Acid and Sodium Hydroxide - UNIPURE WHITE LC985 (SENSIENT LCW) / Iron Oxides Red and Phytic Acid and Sodium Hydroxide - UNIPURE RED LC388 PHY (SENSIENT LCW) / Iron Oxides Yellow and Phytic Acid and Sodium Hydroxide - UNIPURE YELLOW LC188 PHY (SENSIENT LCW) / Iron Oxides Black and Phytic Acid and Sodium Hydroxide - UNIPURE BLACK LC998 PHY (SENSIENT LCW) / Phenoxyethanol and Ethylhexylglycerin - EUXYL PE9010 (SCHULKE AND MAYR).

A formula related to **BEAUTY TRILOGY** concept.

More informations available on **seppic.com**

* Data provide from OECD tests, QSAR calculations, products SDS and literature.



All information contained herein is intended merely to demonstrate the utility of SEPPIC products, and should not be construed as granting license to practice any compositions or methods covered by a patent or a patent application. All information contained in this specific technical documentation is believed to be accurate and has been set up by SEPPIC according to its own described methods and processes. SEPPIC however does not assume any liability or risks involved in the use of its products for the preparation and the assessment of the hereinabove formulation since the condition of use are beyond its control. SEPPIC customer must insure that the duplication of the hereinabove formulation is not infringing any intellectual property rights and that it complies with any regulatory status.



Contacts

Nota

The analytical specifications warranted are only those mentioned on the certificate of analysis supplied with each delivery of the product.

Except as set forth above, Seppic® makes no warranties, whether express, implied or statutory, as to the product which is the subject of this document. Without limiting the generality of the foregoing, Seppic® makes no warranty of merchantability of the product or of the fitness of the product for any particular purpose. Buyer assumes all risk and liability resulting from the use or sale of the product, whether singly or in combination with other goods. The information set forth herein is furnished free of charge and is based on technical data that Seppic® believes to be reliable. It is intended for use by persons having technical skill and at their own discretion and risk. Since conditions of use are outside Seppic®'s control, Seppic® makes no warranties, express or implied, and assumes no liability in connection with any use of this information. Nothing herein is to be taken as a license to operate under or a recommendation to infringe any patents.

* Seppic being:

Seppic S.A. - Paris

Paris La Défense
50 boulevard National
CS 90020
92257 La Garenne Colombes Cedex
FRANCE
Tél : +33 (0)1 42 91 40 00
info.seppic@airliquide.com

Seppic S.A. - Castres

127, chemin de la poudrerie – BP 90128
81105 Castres Cedex
FRANCE
Tél : +33 (0)5 63 72 69 69
Fax : +33 (0)5 63 72 69 70

Seppic S.A. - Pontreux

Zone Industrielle
B.P. 72
22260 Pontreux
FRANCE
Tél : +33 (0)2 96 95 31 32
contact.biotechnmarine@airliquide.com

Seppic S.A. - Lons

1 avenue Normandie Niemen
64140 LONS
FRANCE
Tél : + 33 (0)5 59 13 04 20
contact-serdex@airliquide.com

Seppic S.A. - Villers-sur-Fère

3, rue de Préaux
02130 Villers-sur-Fère
FRANCE
Tél : +33 (0)1 42 91 40 00
info.seppic@airliquide.com

UNITED STATES - Seppic Inc.

30, Two Bridges Road, suite 210
Fairfield
New Jersey 07004-1530
UNITED STATES
Tél : +1 973 882 5597
us.seppic@airliquide.com

UNITED STATES - Polykon Manufacturing LLC

6201 Engineered Wood Way
Sandston
Henrico County VA 23150
UNITED STATES
Tél : +1-804-624-9057
sharon.harper@airliquide.com

BRASIL- Seppic Brasil EQCI Ltda

Alameda Santos 745/ cj 72/ 7ª floor
Cerqueira Cesar
01419-001
São Paulo – SP
BRASIL
Tél : +55 11 3252 3911
brasil.seppic@airliquide.com

COLOMBIA - Seppic Colombia SAS

Calle 71 n°10-40
Edificio Orbe 71 of 401
Bogota
COLOMBIA
Tél : +571 702 44 48
colombia.seppic@airliquide.com

GERMANY- Seppic GmbH

Martinstrasse 16-20
50667 Köln
GERMANY
Tél : +49 (0)221 888824 0
germanv.seppic@airliquide.com

ITALY - Seppic Italia Srl

Via Quarenghi 27
20151 Milano
ITALY
Tél : +39 02 38009110
italy.seppic@airliquide.com

POLAND - Seppic Office

Schülke Polska Sp. z o.o.
Al. Jerozolimskie 132
02-305 Varsovie
POLAND
Tel. +48 22 11 60 759
poland.seppic@airliquide.com

KOREA - Seppic Office

12FL, V-Plex,
501, Teheran-ro
Gangnam-gu,
Seoul, KOREA 06168
Tél : +82-2-3019-2569
korea.seppic@airliquide.com

CHINA - Seppic Shanghai Chemical Specialities Co.

819 West Nanjing Rd,
Room 1508 Zhongchuang Building,
Shanghai 200041
CHINA
Tél : +86 (21) 64 66 01 49
china.seppic@airliquide.com

INDIA - Seppic Speciality Ingredients Pvt Ltd

O2 Commercial Twin Tower
B/1304, Asha Nagar Road
Mulund (W)
Mumbai 400080
INDIA
Tél : + 91 22 61046464
india.seppic@airliquide.com

SINGAPORE - Seppic Office

No. 2 Venture Drive
#22-28 Vision Exchange
Singapore 608526
SINGAPORE
Tél : +65 6378 5213
singapore.seppic@airliquide.com

JAPAN - Seppic Office

Air Liquide Japan's Office
Granpark Tower 3-4-1 Shibaura
Minato-ku, Tokyo 108-8509
JAPAN
Tél : +81 3 6414 6725
japan.seppic@airliquide.com

© 2023 Seppic

Seppic is a subsidiary of the
AIR LIQUIDE group