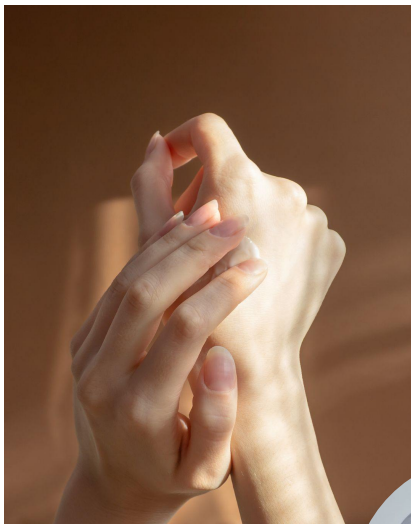




SKIN CARE

AS40093B | MY ICONIC HAND CREAM

A rich and soft cream to take care of your hands.



NATURALITY PROFILE according to ISO 16128 norm



Rich & soft

Deep moisturizing

Repair & confort

A	D.I. Water	Up to 100%
	Glycerin	3.00%
	1,3-Butylene Glycol	3.00%
	SOLAGUM™ AX	0.30%
B	MONTANOV™ 202	4.00%
	Butyrospermum Parkii (Shea Butter)	20.00%
	EMOGREEN™ L19	10.00%
C	SEPINOV™ WEO	0.70%
D	AQUAXYL™	1.50%
	Rosmarinus Officinalis (Rosemary) Leaf extract	0.20%
	Phenoxyethanol and Ethylhexylglycerin	0.70%
	Ethylhexylglycerin and Caprylyl Glycol	0.30%
	Fragrance	0.20%

White Cream / Challenge test: Criteria A / **Packaging: Jar**

pH: 5.8 / **VISCOSITIES: D7 at RT:** 124 000 mPa.s Brookfield LV4-6

Recovery at RT (after 1M at 45°C): mPa.s Brookfield LV4-6

STABILITY: Stable M1 at RT, 45°C, -18°C and cycles -5°C/+40°C.

FORMULATION ADVICES: Laboratory scale - 2 kg

Weigh phase A and B and heat them to 85°C. Add phase C to B, and then add phase A to phase B+C, homogenize it by Silverson rotor-stator 4000 rpm for 4 minutes. Cool down under anchor stirring 100 rpm without water bath for 10 minutes and followed with water bath cooling for another 10 minutes. Add phase D one by one below 45°C and stir till uniform. Stop stirring at 30°C.

The liquid crystal structure and the oily phase with shea butter and EMOGREEN™ L19 make this hand cream deeply moisturising and sensorial.

The real protection for your hands

This rich and soft texture is obtained thanks to **MONTANOV™ 202**, **SEPINOV™ WEO** and **EMOGREEN™ L19**.

MONTANOV™ 202 (Arachidyl Alcohol and Behenyl Alcohol and Arachidyl Glucoside)

Glucolipid emulsifier derived from vegetable origin. **Promoter of liquid crystals**, it plays a role in maintaining skin moisturization over time. Thanks to liquid crystals which contain water, MONTANOV™ 202 helps to keep skin moisturized. Ecocert and Natrue approved.

SEPINOV™ WEO (Hydroxyethyl Acrylate/Sodium Acryloyldimethyl Taurate Copolymer)

Pre-neutralized powder polymeric thickener on a wide pH range (3-12). It has good resistance to electrolytes and imparts a **light, satin-like skin feel**.

EMOGREEN™ L19 (C15-19 Alkane (Plant-based & Renewable))

It is a non polar and biodegradable, bio-sourced emollient. It's **THE alternative to silicone oils**. This high purity vegetable alkane is conformed to Cosmos and Natrue.

SOLAGUM™ AX (Acacia Senegal Gum - Xanthan Gum)

Smart combination of **natural thickening polymers**, it allows to formulate non-stringy translucent gels with intermediate viscosity. It also offers better stabilizing effect than xanthan gum while ensuring easy spreading and film forming effect.

AQUAXYL™ (Xylitylglycoside and Anhydroxylitol and Xylitol)

AQUAXYL™ moisturizes and restructures the skin by harmonizing the hydric flow of the skin. Water reserves are instantly boosted, water circulation is improved in all skin layers and water loss is reduced (in vitro and in vivo tests prove this efficacy). It's mechanism of action has been validated by cosmetogenomics. Cosmos and Natrue

ADDITIONAL INGREDIENTS: Glycerin - Pricerine 9091 (KARRY) / BUTYROSPIRUM PARKII (SHEA BUTTER); Lipex Shea (AAK)/ROSMARINUS OFFICINALIS (ROSEMARY) LEAF EXTRACT;Duralax Oxidation management blend NH10 (Kalsce)/ Phenoxyethanol (and) Ethylhexylglycerin; Euxyl PE 9010 (S&M)/ Ethylhexylglycerin and Caprylyl glycol; Euxyl SC 10 (S&M)/Fragrance: FragZ76148(Drom)

More informations available on seppic.com

SEPPIC

All information contained herein is intended merely to demonstrate the utility of Seppic products, and should not be construed as granting license to practice any compositions or methods covered by a patent or a patent application. All information contained in this specific technical documentation is believed to be accurate and has been set up by Seppic according to its own described methods and processes. Seppic however does not assume any liability or risks involved in the use of its products for the preparation and the assessment of the hereinabove formulation since the condition of use are beyond its control. Seppic customer must insure that the duplication of the hereinabove formulation is not infringing any intellectual property rights and that it complies with any regulatory status.

Une société
Air Liquide
HEALTH CARE