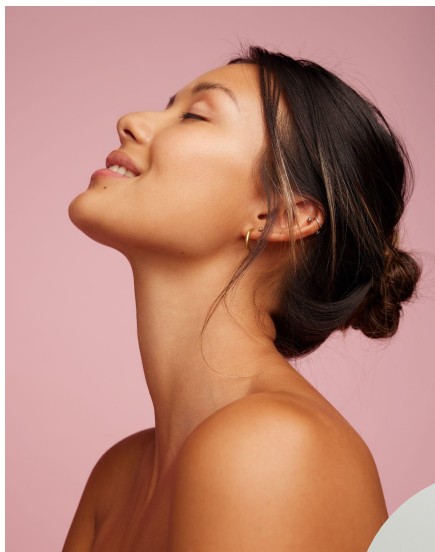




SKIN CARE

US20113A | JELLY BODY MOISTURIZER

An elastic cream gel with a cushiony effect



Cream Gel

NOC = 89.8%
NATURALITY PROFILE according to ISO 16128 normMoisturization
Pollution protection
Comfort sensation

A	D.I Water	71.70%
	Glycerin	1.50%
	AQUAXYL™	3.00%
	Benzyl alcohol (and) Benzoic acid (and) Dehydroacetic acid (and) Tocopherol	1.00%
B	EMOGREEN™ L19	10.00%
	Ethylhexyl polyhydroxystearate	4.00%
	Fragrance "Pink Blossom"	0.30%
	Isononyl Isononanoate	6.00%
C	SEPIMAX ZEN™	1.00%
	SEPI NOV™ EMT 10	1.50%
D	Color D&C red #33	0.017%

Pink cream / Packaging: Jar

pH: 5.04 / **VISCOSITIES: 1M at RT:** 372 e3 cps Brookfield LV64 @ 15 rpm

Recovery at RT (after 1M at 45°C): 78,265 cps Brookfield LV96 @ 6.0 rpm

STABILITY: Passed 3 months at 45C & RT, 3F/T cycles (-5C/+40C)

FORMULATION ADVICES: Laboratory scale - 300g batch - High Shear Blade

Combine phase A and mix well. Combine phase B and mix well and then disperse phase C into phase B. While using high shear dispersing blade, add phase BC into phase A and mix until smooth cream is formed. Add color and adjust pH to 5-5.5.



COLD PROCESS

Extreme pick-up, nice glide and soft after feel, for a perfect enveloping body moisturizer

Wrap your body in this jelly moisturizer!

SEPI NOV™ EMT 10 stabilizes and thickens this bright pink jelly skin care

(Hydroxyethyl Acrylate/Sodium Acryloyldimethyl Taurate Copolymer)

A pre-neutralized powder polymeric thickener, working on a wide pH range (3-12). It also provides excellent **oil stabilizing property** even in presence of a high percentage of oily phase. It imparts satiny and fresh skin feel.

SEPIMAX ZEN™ suspends and stabilizes the cream gel, for a surprising elastic texture

(Polyacrylate Crosspolymer-6)

A next-generation **thickening, stabilizing and texturizing** powder polymer. It has a MAXimal resistance to electrolytes. The perfect polymer for building the "chassis" of formulations and addressing the challenge of stress-inducing and difficult active ingredients. It forms gels with a **velvety, rich and elegant feel**.

EMO GREEN™ L19 gives a refreshing and gliding sensation with a soft afterfeel. (C15-19 Alkane)* Plant-based & Renewable

EMO GREEN™ L19 is a non polar and biodegradable, bio-sourced emollient. It's THE **alternative to silicone oils**. This high purity vegetable alkane is conformed to Cosmos. It gives a **fresh and gliding touch**, with a soft afterfeel.

AQUAXYL™ moisturizes and restructures the skin (Xylitylglucoside and Anhydroxylitol and Xylitol)

This natural plant sugars complex **boosts water reserves**, water circulation in all skin layers and **reduces water loss**.

ADDITIONAL INGREDIENTS: Benzyl alcohol and benzoic acid and dehydroacetic acid and tocopherol / Euxyl® K 903 (Schulke) / Glycerin / Fragrance (SOZIO) / Color: D&C Red #33. 1.0% solution w/w / Ethylhexyl polyhydroxystearate: DUB ESTOLINE (DUBOIS) / Isononyl Isononanoate: DUB INN (Dubois)

* Data provide from OECD tests, QSAR calculations, products SDS and literature.

More informations available on seppic.com

SEPPIC

All information contained herein is intended merely to demonstrate the utility of Seppic products, and should not be construed as granting license to practice any compositions or methods covered by a patent or a patent application. All information contained in this specific technical documentation is believed to be accurate and has been set up by Seppic according to its own described methods and processes. Seppic however does not assume any liability or risks involved in the use of its products for the preparation and the assessment of the hereinabove formulation since the condition of use are beyond its control. Seppic customer must insure that the duplication of the hereinabove formulation is not infringing any intellectual property rights and that it complies with any regulatory status.

A company
Air Liquide
HEALTH CARE