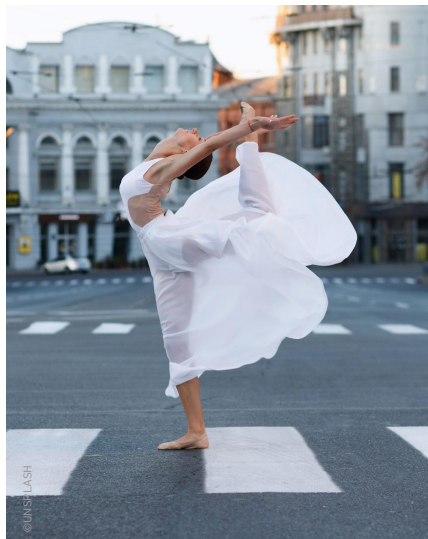




EU07405 | PURIFYING & ANTI-POLLUTION SERUM

Cocooning anti-pollution serum



Cream
Gel

Comfortable skin feel

Light and soft touch

Anti-pollution

A	Aqua/Water Glycerin	Up to 100% 3.50%
B	LANOL™ 99 Isostearyl isostearate EMOGREEN™ L19	2.00% 4.00% 6.00%
C	SEPINOV™ EMT 10 SEPIPLUS™ S	1.00% 0.70%
D	Phenoxyethanol and Ethylhexylglycerin Phenylpropanol - Propanediol - Caprylyl Glycol - Tocopherol	1.00% 0.50%
E	Fragrance CONTACTICEL™	0.10% 1.00%
F	NaOH 1%	Qs pH

White Emulsion / Packaging: Tube

pH: 6.16 / **VISCOSITIES: 1M at RT:** 54,800 mPa.s Brookfield LV4-6 /
Recovery at RT (after 1M at 45°C): 52,600 mPa.s Brookfield LV4-6.
STABILITY: 1M at RT, 45°C, cycles -5°C/+40°C.

FORMULATION ADVICES: Pilote - 6 Kg - Trimix

Introduce phase A in Trimix tank and homogenize. Prepare the phase B in a beaker. Disperse phase C into phase B. Introduce the phase (B+C) in the Trimix. Put under agitation. Add ingredients of phase F. Put under agitation. Put under vacuum.



COLD
PROCESS

A cocooning serum which fights against pollution and purifying while bringing comfort and softness.

Urban daily serum is your best partner !

The combination of **SEPINOV™ EMT10** & **SEPIPLUS™ S** provides a gliding texture and a comfortable skin feel:

SEPINOV™ EMT10 imparts satiny and fresh skin feel. (Hydroxyethyl Acrylate/Sodium Acryloyldimethyl Taurate Copolymer): Pre-neutralized powder polymeric thickener on a wide pH range (3-12). It provides also excellent oil stabilizing property. Excellent tolerance even for irritated skin.

SEPIPLUS™ S offers absolute comfort to the skin. (Hydroxyethyl Acrylate/Sodium Acryloyldimethyl Taurate Copolymer and Polyisobutene and PEG-7 Trimethylolpropane Coconut Ether): Pre-neutralized and concentrated liquid polymeric thickener on a wide range of pH (3 to 12). It offers excellent resistance to electrolytes.

LANOL™ 99 brings a non greasy finish and a soft and light touch. (Isononyl Isononanoate)
Emollient agent. Polar ester. Short play-time.

EMOGREEN™ L19 provides a good play time and a light and soft skin feel. (C15-19 Alkane)/(Plant-based & Renewable)
It is a non polar and **readily biodegradable**, bio-sourced emollient. It's THE alternative to silicone oils. **Conformed to Cosmos and Natrue approved.** Inert and stable.

CONTACTICEL™ normalizes sebum excess in polluted atmosphere.

(Aqua/Water - Butylene Glycol - Hydrolyzed Rhodophyceae Extract)

Macroalgae cells of *Acrochaetium moniliforme*, from **CELEBRITY™** technology. Efficacy's **CONTACTICEL™** proven on volunteers : it has been shown to limit excessive sebum production in Shanghai's polluted atmosphere and to reduce the ozonized squalene, it allows a protection of the skin against ozone.

ADDITIONAL INGREDIENTS: Isostearyl isostearate: DUB ISIS (STEARINERIE DUBOIS) / Phenoxyethanol and Ethylhexylglycerin: EUXYL PE9010 (SCHULKE & MAYR) / Phenylpropanol - Propanediol - Caprylyl Glycol - Tocopherol: SENSIVA PA40 (SCHULKE & MAYR) / Fragrance: PARFUM FLEUR DE CERISIER (MD FRAGRANCE).

More informations available on seppic.com